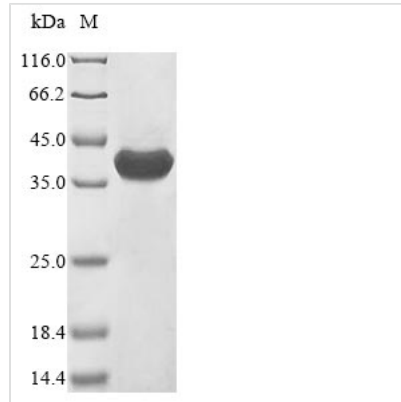




# Recombinant Naja kaouthia Alpha-cobratoxin

<b>Product Code</b>	CSB-EP365543NAF
<b>Relevance</b>	<p>Monomer: binds with high affinity to muscular (alpha-1-beta-1-gamma-delta (CHRNA1/CHRNB1/CHRNG/CHRND) nAChR) (IC50=4.5 nM on Torpedo californica membranes) and neuronal alpha-7/CHRNA7 nicotinic acetylcholine receptors (IC50=105 nM).<sup>2</sup> Publications Homodimer: binds with high affinity (but lower than the monomeric form) to muscular (IC50=9.7 nM) and with low affinity to neuronal alpha-7/CHRNA7 nAChRs (IC50=1370 nM). However, it acquires (compared to the monomeric form) the capacity to block alpha-3/beta-2 (CHRNA3/CHRNB2) nAChRs Heterodimer with cytotoxin 3 (AC P01446): is slightly more active than the homodimer in inhibiting alpha-7 nAChR and is considerably more active in blocking the alpha-3-beta-2 nAChR. The monomeric form has no effect on alpha-3/beta-2 (CHRNA3/CHRNB2) nAChR. It does not show any blockade of the nicotine-evoked release of dopamine and does not affect ACh release.</p>
<b>Abbreviation</b>	Recombinant Naja kaouthia Alpha-cobratoxin protein
<b>Storage</b>	The shelf life is related to many factors, storage state, buffer ingredients, storage temperature and the stability of the protein itself. Generally, the shelf life of liquid form is 6 months at -20°C/-80°C. The shelf life of lyophilized form is 12 months at -20°C/-80°C.
<b>Uniprot No.</b>	P01391
<b>Product Type</b>	Recombinant Protein
<b>Immunogen Species</b>	Naja kaouthia (Monocled cobra) (Naja siamensis)
<b>Purity</b>	Greater than 85% as determined by SDS-PAGE.
<b>Sequence</b>	IRCFITPDITSKDCPNGHVICYTKTWCDAFCSIRGKRVDLGCAATCPTVKTGVDI QCCSTDNCNPFPTKRKP
<b>Research Area</b>	Others
<b>Source</b>	E.coli
<b>Protein Names</b>	Alpha-elapitoxin-Nk2aShort name:Alpha-EPTX-Nk2aLong neurotoxin 1Siamensis 3
<b>Expression Region</b>	1-71aa
<b>Notes</b>	Repeated freezing and thawing is not recommended. Store working aliquots at 4°C for up to one week.
<b>Tag Info</b>	N-terminal 10xHis-GST-tagged and C-terminal Myc-tagged
<b>Mol. Weight</b>	37.8 kDa
<b>Protein Length</b>	Full Length
<b>Image</b>	



(Tris-Glycine gel) Discontinuous SDS-PAGE (reduced) with 5% enrichment gel and 15% separation gel.

### Reconstitution

We recommend that this vial be briefly centrifuged prior to opening to bring the contents to the bottom. Please reconstitute protein in deionized sterile water to a concentration of 0.1-1.0 mg/mL. We recommend to add 5-50% of glycerol (final concentration) and aliquot for long-term storage at -20°C/-80°C. Our default final concentration of glycerol is 50%. Customers could use it as reference.

### Shelf Life

The shelf life is related to many factors, storage state, buffer ingredients, storage temperature and the stability of the protein itself. Generally, the shelf life of liquid form is 6 months at -20°C/-80°C. The shelf life of lyophilized form is 12 months at -20°C/-80°C.