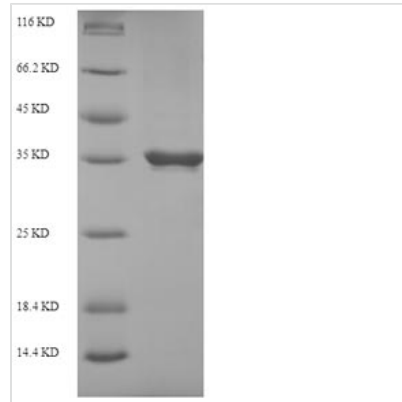




# Recombinant *Coptis japonica* S-norcoclaurine synthase 2 (PR10A)

<b>Product Code</b>	CSB-EP381182CXF
<b>Relevance</b>	Involved in the biosynthesis of the common precursor of all benzylisoquinoline alkaloids such as morphine, sanguinarine, codeine or berberine. Condenses dopamine and pyruvic acid or 4-hydroxyphenylpyruvate.
<b>Abbreviation</b>	Recombinant <i>Coptis japonica</i> PR10A protein
<b>Storage</b>	The shelf life is related to many factors, storage state, buffer ingredients, storage temperature and the stability of the protein itself. Generally, the shelf life of liquid form is 6 months at -20°C/-80°C. The shelf life of lyophilized form is 12 months at -20°C/-80°C.
<b>Uniprot No.</b>	A2A1A1
<b>Alias</b>	Pathogenesis related protein 10A ;CjPR10A
<b>Product Type</b>	Recombinant Protein
<b>Immunogen Species</b>	<i>Coptis japonica</i> (Japanese goldthread)
<b>Purity</b>	≥ 90% as determined by SDS-PAGE.
<b>Sequence</b>	ERLIFNGRPLLHRVTKEETVMPLYHELEVAASADEVWSVEGSPELGLHLPDLLP AGIFAKFEITGDGGEGSILDMTFPPGQFP HHYREKFVFFDHKNRYKLVEQIDGD FFDLGVTTYMDTIRVVATGPDSCVIKSTTEYHVKPEFAKIVKPLIDTVPLAIMSEA IAKVVLENKHKSSSE
<b>Research Area</b>	Others
<b>Source</b>	E.coli
<b>Target Names</b>	PR10A
<b>Protein Names</b>	Recommended name: S-norcoclaurine synthase 2 EC= 4.2.1.78 Alternative name(s): Pathogenesis related protein 10A Short name= CjPR10A
<b>Expression Region</b>	20-196aa
<b>Notes</b>	Repeated freezing and thawing is not recommended. Store working aliquots at 4°C for up to one week.
<b>Tag Info</b>	N-terminal 6xHis-SUMO-tagged
<b>Mol. Weight</b>	36.0kDa
<b>Protein Length</b>	Full Length of Mature Protein
<b>Image</b>	



(Tris-Glycine gel) Discontinuous SDS-PAGE (reduced) with 5% enrichment gel and 15% separation gel.

### Reconstitution

We recommend that this vial be briefly centrifuged prior to opening to bring the contents to the bottom. Please reconstitute protein in deionized sterile water to a concentration of 0.1-1.0 mg/mL. We recommend to add 5-50% of glycerol (final concentration) and aliquot for long-term storage at -20°C/-80°C. Our default final concentration of glycerol is 50%. Customers could use it as reference.

### Shelf Life

The shelf life is related to many factors, storage state, buffer ingredients, storage temperature and the stability of the protein itself. Generally, the shelf life of liquid form is 6 months at -20°C/-80°C. The shelf life of lyophilized form is 12 months at -20°C/-80°C.