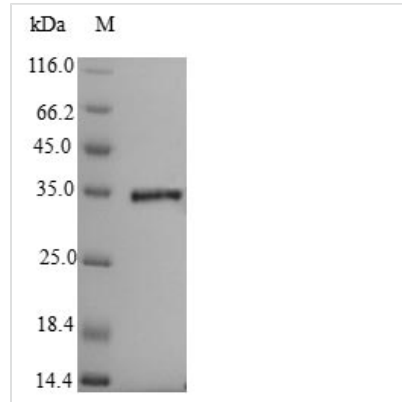




Recombinant Clostridium botulinum Penicillin-binding protein 1A (pbpA), Partial

Product Code	CSB-EP401992CWV
Relevance	Cell wall formation. Synthesis of cross-linked peptidoglycan from the lipid intermediates. The enzyme has a penicillin-insensitive transglycosylase N-terminal domain (formation of linear glycan strands) and a penicillin-sensitive transpeptidase C-terminal domain (cross-linking of the peptide subunits).
Abbreviation	Recombinant Clostridium botulinum pbpA protein, partial
Storage	The shelf life is related to many factors, storage state, buffer ingredients, storage temperature and the stability of the protein itself. Generally, the shelf life of liquid form is 6 months at -20°C/-80°C. The shelf life of lyophilized form is 12 months at -20°C/-80°C.
Uniprot No.	A5I6G4
Alias	Peptidoglycan TGase DD-transpeptidase
Product Type	Recombinant Protein
Immunogen Species	Clostridium botulinum (strain Hall / ATCC 3502 / NCTC 13319 / Type A)
Purity	Greater than 90% as determined by SDS-PAGE.
Sequence	VDRISGKLPTQLSYRDPRGSTVYNEFFINGTIPT EYDDIHVEAQINKLTGKLASK FTPSFLVESRVFLRRDYSPGVLLDQQWLLPYSIDEGGSLPPT EEKNNNSNTRD KNKDKNKNKNKDKNPSQDKPNNNNNDNNSNNNNNNNDN NNNTKPPENDSN QNHEDNKNKQ
Research Area	Cell Biology
Source	E.coli
Target Names	pbpA
Expression Region	663-830aa
Notes	Repeated freezing and thawing is not recommended. Store working aliquots at 4°C for up to one week.
Tag Info	N-terminal 6xHis-SUMO-tagged
Mol. Weight	35.2kDa
Protein Length	Partial
Image	



(Tris-Glycine gel) Discontinuous SDS-PAGE (reduced) with 5% enrichment gel and 15% separation gel.

Reconstitution

We recommend that this vial be briefly centrifuged prior to opening to bring the contents to the bottom. Please reconstitute protein in deionized sterile water to a concentration of 0.1-1.0 mg/mL. We recommend to add 5-50% of glycerol (final concentration) and aliquot for long-term storage at -20°C/-80°C. Our default final concentration of glycerol is 50%. Customers could use it as reference.

Shelf Life

The shelf life is related to many factors, storage state, buffer ingredients, storage temperature and the stability of the protein itself. Generally, the shelf life of liquid form is 6 months at -20°C/-80°C. The shelf life of lyophilized form is 12 months at -20°C/-80°C.