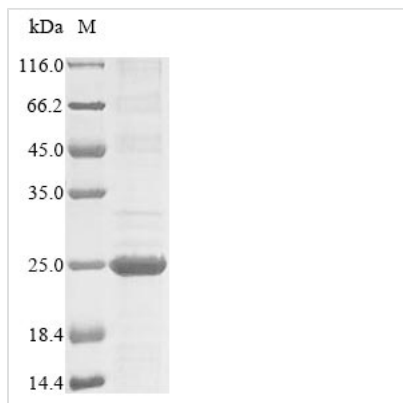


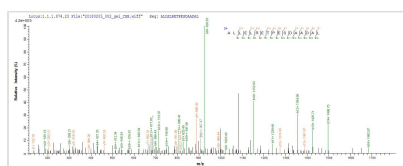


Recombinant Akkermansia muciniphila Crossover junction endodeoxyribonuclease RuvC (ruvC)

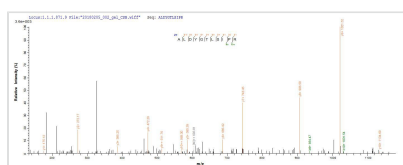
Product Code	CSB-EP453002AZF
Relevance	Nuclease that resolves Holliday junction intermediates in genetic recombination. Cleaves the cruciform structure in supercoiled DNA by nicking to strands with the same polarity at sites symmetrically opposed at the junction in the homologous arms and leaves a 5'-terminal phosphate and a 3'-terminal hydroxyl group.
Abbreviation	Recombinant Akkermansia muciniphila ruvC protein
Storage	The shelf life is related to many factors, storage state, buffer ingredients, storage temperature and the stability of the protein itself. Generally, the shelf life of liquid form is 6 months at -20°C/-80°C. The shelf life of lyophilized form is 12 months at -20°C/-80°C.
Uniprot No.	B2UP63
Product Type	Recombinant Protein
Immunogen Species	Akkermansia muciniphila (strain ATCC BAA-835 / Muc)
Purity	Greater than 85% as determined by SDS-PAGE.
Sequence	MRILAIDPAIRNTGYAVVEGDYRRARALDYGTL SIPRSVVSQSGCLLAIKQHLGNL IDKWNPDEMAVERIIYVQSHQTAITMGAAKAAVVIAAAEAGLRIMEYSPKSVKLS VVGRGAAQKTQVAFMVRALLELRETPESDAADALAIGLTHLFSADPLKAHMME RKYI
Research Area	Epigenetics and Nuclear Signaling
Source	E.coli
Target Names	ruvC
Protein Names	Holliday junction nuclease RuvC Holliday junction resolvase RuvC
Expression Region	1-167aa
Notes	Repeated freezing and thawing is not recommended. Store working aliquots at 4°C for up to one week.
Tag Info	N-terminal 10xHis-tagged and C-terminal Myc-tagged
Mol. Weight	23.2 kDa
Protein Length	Full Length
Image	



(Tris-Glycine gel) Discontinuous SDS-PAGE (reduced) with 5% enrichment gel and 15% separation gel.



Based on the SEQUEST from database of E.coli host and target protein, the LC-MS/MS Analysis result of CSB-EP453002AZF could indicate that this peptide derived from E.coli-expressed Akkermansia muciniphila (strain ATCC BAA-835 / Muc) ruvC.



Based on the SEQUEST from database of E.coli host and target protein, the LC-MS/MS Analysis result of CSB-EP453002AZF could indicate that this peptide derived from E.coli-expressed Akkermansia muciniphila (strain ATCC BAA-835 / Muc) ruvC.

Reconstitution

We recommend that this vial be briefly centrifuged prior to opening to bring the contents to the bottom. Please reconstitute protein in deionized sterile water to a concentration of 0.1-1.0 mg/mL. We recommend to add 5-50% of glycerol (final concentration) and aliquot for long-term storage at -20°C/-80°C. Our default final concentration of glycerol is 50%. Customers could use it as reference.

Shelf Life

The shelf life is related to many factors, storage state, buffer ingredients, storage temperature and the stability of the protein itself. Generally, the shelf life of liquid form is 6 months at -20°C/-80°C. The shelf life of lyophilized form is 12 months at -20°C/-80°C.