



Recombinant Human Proteasome subunit beta type-7 (PSMB7), partial

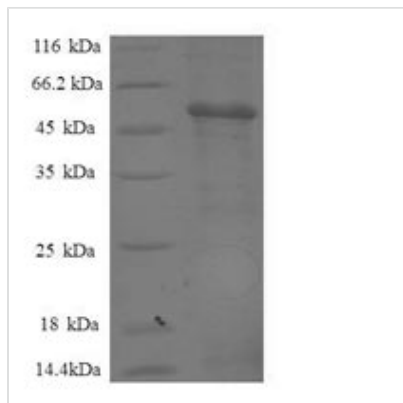
Product Code	CSB-RP013454h
Relevance	Component of the 20S core proteasome complex involved in the proteolytic degradation of most intracellular proteins. This complex plays numerous essential roles within the cell by associating with different regulatory particles. Associated with two 19S regulatory particles, forms the 26S proteasome and thus participates in the ATP-dependent degradation of ubiquitinated proteins. The 26S proteasome plays a key role in the maintenance of protein homeostasis by removing misfolded or damaged proteins that could impair cellular functions, and by removing proteins whose functions are no longer required. Associated with the PA200 or PA28, the 20S proteasome mediates ubiquitin-independent protein degradation. This type of proteolysis is required in several pathways including spermatogenesis (20S-PA200 complex) or generation of a subset of MHC class I-presented antigenic peptides (20S-PA28 complex). Within the 20S core complex, PSMB7 displays a trypsin-like activity.
Abbreviation	Recombinant Human PSMB7 protein, partial
Storage	The shelf life is related to many factors, storage state, buffer ingredients, storage temperature and the stability of the protein itself. Generally, the shelf life of liquid form is 6 months at -20°C/-80°C. The shelf life of lyophilized form is 12 months at -20°C/-80°C.
Uniprot No.	Q99436
Alias	Macropain chain Z;Multicatalytic endopeptidase complex chain Z;Proteasome subunit Z
Product Type	Recombinant Protein
Immunogen Species	Homo sapiens (Human)
Purity	≥ 90% as determined by SDS-PAGE.
Sequence	TTIAGVVYKDGIVLGADTRATEGMVVADKNCISKIHFISPNIYCCGAGTAADTDM TTQLISSNLELHSLSTGRLPRVVTANRMLKQMLFRYQGYIGAALVLGGVDVTG PHLYSIYPHGSTDKLPYVTMGSGSLAAMAVFEDKFRPDMEEEEAKNLVSEAIA AGIFNDLGSNSNIDLCSKKNKLDFLRPYTPNKKGTRLGRYRCEKGTAVLTE KITPLEIEVLEETVQTMD
Research Area	Immunology
Source	E.coli
Target Names	PSMB7
Expression Region	44-275aa
Notes	Repeated freezing and thawing is not recommended. Store working aliquots at 4°C for up to one week.
Tag Info	N-terminal GST-tagged



Mol. Weight 52.1kDa

Protein Length Partial

Image



(Tris-Glycine gel) Discontinuous SDS-PAGE (reduced) with 5% enrichment gel and 15% separation gel.

Reconstitution

We recommend that this vial be briefly centrifuged prior to opening to bring the contents to the bottom. Please reconstitute protein in deionized sterile water to a concentration of 0.1-1.0 mg/mL. We recommend to add 5-50% of glycerol (final concentration) and aliquot for long-term storage at -20°C/-80°C. Our default final concentration of glycerol is 50%. Customers could use it as reference.

Shelf Life

The shelf life is related to many factors, storage state, buffer ingredients, storage temperature and the stability of the protein itself. Generally, the shelf life of liquid form is 6 months at -20°C/-80°C. The shelf life of lyophilized form is 12 months at -20°C/-80°C.