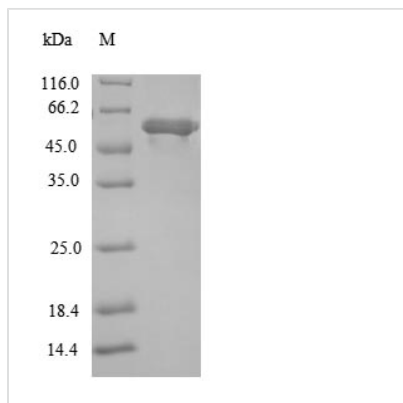




Recombinant Escherichia coli Lipoate-protein ligase A (IplA)

Product Code	CSB-EP510777ENU
Relevance	Catalyzes both the ATP-dependent activation of exogenously supplied lipoate to lipoyl-AMP and the transfer of the activated lipoyl onto the lipoyl domains of lipoate-dependent enzymes.
Abbreviation	Recombinant E.coli IplA protein
Storage	The shelf life is related to many factors, storage state, buffer ingredients, storage temperature and the stability of the protein itself. Generally, the shelf life of liquid form is 6 months at -20°C/-80°C. The shelf life of lyophilized form is 12 months at -20°C/-80°C.
Uniprot No.	C4ZT68
Alias	Lipoate--protein ligase
Product Type	Recombinant Protein
Immunogen Species	Escherichia coli (strain K12 / MC4100 / BW2952)
Purity	≥ 90% as determined by SDS-PAGE.
Sequence	MSTLRL LISDSYDPWFNLA VEECIFRQMPATQRVLF LWRNADTVVIGRAQNPW KECNTRRMEEDNVRLARRSSGGGAVFHDLGNTCFTFMAGKPEYDKTISTSIVL NALNALGVSAEASGRNDLVVKTVEGDRKVS GSAYRETKDRGFHHGTL LLLNAD LSRLANYLNPDKKKLAAKGITSVRSRVTNL TELLPGITHEQVCEAITEAFFAHYG ERVEAEIISP NKTPDLPNFAETFARQSSWEWNFGQAPAFSHLLDERFTWGGV ELHFDVEKGHITRAQVFTDSLNPAPLEALAGRLQGCLYRADMLQQECEALLVD FPEQEKELRELSAWMAGAVR
Research Area	Others
Source	E.coli
Target Names	IplA
Protein Names	Recommended name: Lipoate-protein ligase A EC= 2.7.7.63 Alternative name(s): Lipoate--protein ligase
Expression Region	1-338aa
Notes	Repeated freezing and thawing is not recommended. Store working aliquots at 4°C for up to one week.
Tag Info	N-terminal 6xHis-SUMO-tagged
Mol. Weight	53.9kDa
Protein Length	Full Length
Image	



(Tris-Glycine gel) Discontinuous SDS-PAGE (reduced) with 5% enrichment gel and 15% separation gel.

Reconstitution

We recommend that this vial be briefly centrifuged prior to opening to bring the contents to the bottom. Please reconstitute protein in deionized sterile water to a concentration of 0.1-1.0 mg/mL. We recommend to add 5-50% of glycerol (final concentration) and aliquot for long-term storage at -20°C/-80°C. Our default final concentration of glycerol is 50%. Customers could use it as reference.

Shelf Life

The shelf life is related to many factors, storage state, buffer ingredients, storage temperature and the stability of the protein itself. Generally, the shelf life of liquid form is 6 months at -20°C/-80°C. The shelf life of lyophilized form is 12 months at -20°C/-80°C.