

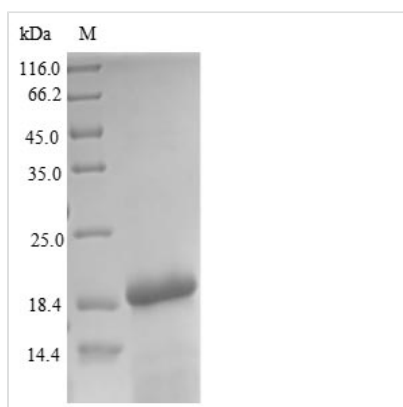


Recombinant *Drosophila melanogaster* General odorant-binding protein lush (lush)

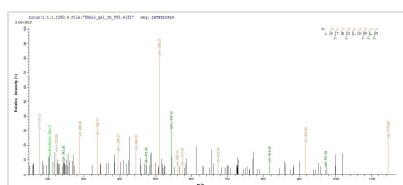
Product Code	CSB-EP517298DLU
Relevance	Odorant-binding protein required for olfactory behavior and for activity of pheromone-sensitive neurons. Binds to alcohols and mediates avoidance behavior to high concentrations of alcohols, the alcohol-binding possibly resulting in activation of receptors on T2B neurons, the activation of these receptors inhibiting these neurons. Acts in concert with Snmp and lush to capture cVA molecules on the surface of Or67d expressing olfactory dendrites and facilitate their transfer to the odorant-receptor Orco complex. Required for cVA response, probably by binding to VA. May act by serving as an adapter that bridges the presence of gaseous pheromone molecules, cVA, to activation of specific neuronal receptors expressed on T1 olfactory neurons, possibly via a specific conformational change induced by cVA that in turn activates T1 receptors. T1 neurons are excited by the pheromone VA, while T2 neurons are inhibited by alcohols. Also binds to phthalates.
Abbreviation	Recombinant <i>Drosophila melanogaster</i> lush protein
Storage	The shelf life is related to many factors, storage state, buffer ingredients, storage temperature and the stability of the protein itself. Generally, the shelf life of liquid form is 6 months at -20°C/-80°C. The shelf life of lyophilized form is 12 months at -20°C/-80°C.
Uniprot No.	O02372
Product Type	Recombinant Protein
Immunogen Species	<i>Drosophila melanogaster</i> (Fruit fly)
Purity	≥ 90% as determined by SDS-PAGE.
Sequence	MTMEQFLTSLDMIRSGCAPKFKLKTEDLDRLRVGDFNFPPSQDLMCYTKCVSL MAGTVNKKGEFNAPKALAQLPHLVPEMMEMSRKSVEACRDTHKQFKESCE RVYQTAKCFSENADGQFMWP
Research Area	others
Source	E.coli
Target Names	lush
Protein Names	Recommended name: General odorant-binding protein lush
Expression Region	30-153aa
Notes	Repeated freezing and thawing is not recommended. Store working aliquots at 4°C for up to one week.
Tag Info	N-terminal 10xHis-tagged and C-terminal Myc-tagged
Mol. Weight	19.2kDa
Protein Length	Full Length of Mature Protein



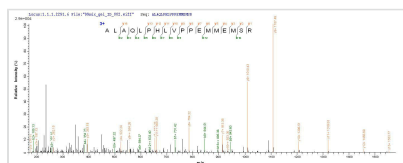
Image



(Tris-Glycine gel) Discontinuous SDS-PAGE (reduced) with 5% enrichment gel and 15% separation gel.



Based on the SEQUEST from database of E.coli host and target protein, the LC-MS/MS Analysis result of CSB-EP517298DLU could indicate that this peptide derived from E.coli-expressed *Drosophila melanogaster* (Fruit fly) lush.



Based on the SEQUEST from database of E.coli host and target protein, the LC-MS/MS Analysis result of CSB-EP517298DLU could indicate that this peptide derived from E.coli-expressed *Drosophila melanogaster* (Fruit fly) lush.

Reconstitution

We recommend that this vial be briefly centrifuged prior to opening to bring the contents to the bottom. Please reconstitute protein in deionized sterile water to a concentration of 0.1-1.0 mg/mL. We recommend to add 5-50% of glycerol (final concentration) and aliquot for long-term storage at -20°C/-80°C. Our default final concentration of glycerol is 50%. Customers could use it as reference.

Shelf Life

The shelf life is related to many factors, storage state, buffer ingredients, storage temperature and the stability of the protein itself.

Generally, the shelf life of liquid form is 6 months at -20°C/-80°C. The shelf life of lyophilized form is 12 months at -20°C/-80°C.