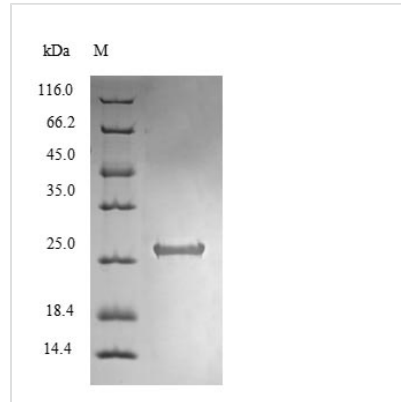




Recombinant Mycobacterium tuberculosis Toxin RelG (relG)

Product Code	CSB-EP521896MVZ
Relevance	Toxic component of a toxin-antitoxin (TA) module. Has RNase activity and preferentially cleaves at the 3'-end of purine ribonucleotides. Overexpression in M.tuberculosis or M.smegmatis inhibits colony formation in a bacteriostatic rather than bacteriocidal fashion. Its toxic effect is neutralized by coexpression with cognate antitoxin RelB2 (shown only for M.smegmatis). Overexpression also increases the number of gentamicin-tolerant and levofloxacin-tolerant persister cells.
Abbreviation	Recombinant Mycobacterium tuberculosis relG protein
Storage	The shelf life is related to many factors, storage state, buffer ingredients, storage temperature and the stability of the protein itself. Generally, the shelf life of liquid form is 6 months at -20°C/-80°C. The shelf life of lyophilized form is 12 months at -20°C/-80°C.
Uniprot No.	O33348
Alias	Putative endoribonuclease RelG
Product Type	Recombinant Protein
Immunogen Species	Mycobacterium tuberculosis (strain ATCC 25618 / H37Rv)
Purity	Greater than 90% as determined by SDS-PAGE.
Sequence	MPYTVRFTTTARRDLHKLPPRILAAVVEFAFGDLSREPLRVGKPLRRELAGTFS ARRGTYRLLYRIDDEHTTVILRVDHRADIYRR
Research Area	others
Source	E.coli
Target Names	relG
Protein Names	Recommended name: Toxin RelG EC= 3.1.-.- Alternative name(s): Putative endoribonuclease RelG
Expression Region	1-87aa
Notes	Repeated freezing and thawing is not recommended. Store working aliquots at 4°C for up to one week.
Tag Info	N-terminal 6xHis-SUMO-tagged
Mol. Weight	26.2kDa
Protein Length	Full Length

Image



(Tris-Glycine gel) Discontinuous SDS-PAGE (reduced) with 5% enrichment gel and 15% separation gel.

Reconstitution

We recommend that this vial be briefly centrifuged prior to opening to bring the contents to the bottom. Please reconstitute protein in deionized sterile water to a concentration of 0.1-1.0 mg/mL. We recommend to add 5-50% of glycerol (final concentration) and aliquot for long-term storage at $-20^{\circ}\text{C}/-80^{\circ}\text{C}$. Our default final concentration of glycerol is 50%. Customers could use it as reference.

Shelf Life

The shelf life is related to many factors, storage state, buffer ingredients, storage temperature and the stability of the protein itself.

Generally, the shelf life of liquid form is 6 months at $-20^{\circ}\text{C}/-80^{\circ}\text{C}$. The shelf life of lyophilized form is 12 months at $-20^{\circ}\text{C}/-80^{\circ}\text{C}$.