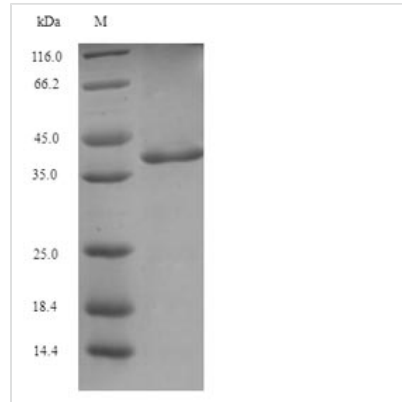




Recombinant Blattella germanica Glutathione S-transferase

Product Code	CSB-EP522732BTL
Abbreviation	Recombinant Blattella germanica Glutathione S-transferase protein
Storage	The shelf life is related to many factors, storage state, buffer ingredients, storage temperature and the stability of the protein itself. Generally, the shelf life of liquid form is 6 months at -20°C/-80°C. The shelf life of lyophilized form is 12 months at -20°C/-80°C.
Uniprot No.	O18598
Product Type	Recombinant Protein
Immunogen Species	Blattella germanica (German cockroach) (Blatta germanica)
Purity	>85% (SDS-PAGE)
Sequence	APSYKLTYC PVKALGEPPIR FLLSYGEKDF EDYRFQEGDW PNLKPSMPFG KTPVLEIDGK QTHQSVAISR YLGKQFGLSG KDDWENLEID MIVDTISDFR AAIANYHYDA DENSKQKKWD PLKKETIPYY TKKFDEVVKA NGGYLAAGKL TWADFYFVAI LDYLNHMAKE DLVANQPNLK ALREKVLGLP AIKAWVAKRP PTDL
Source	E.coli
Protein Names	Recommended name: Glutathione S-transferase EC= 2.5.1.18 Alternative name(s): GST class-sigma Major allergen Bla g 5 Allergen= Bla g 5
Expression Region	2-204
Notes	Repeated freezing and thawing is not recommended. Store working aliquots at 4°C for up to one week.
Tag Info	N-terminal His-tagged and C-terminal Myc-tagged N-terminal His-SUMO-tagged and C-terminal Myc-tagged N-terminal His-B2M-tagged and C-terminal Myc-tagged N-terminal His-GST-tagged and C-terminal Myc-tagged N-terminal His-tagged N-terminal His-SUMO-tagged N-terminal His-B2M-tagged N-terminal His-GST-tagged N-terminal GST-tagged Tag-Free
Protein Length	Full Length of Mature Protein
Image	



(Tris-Glycine gel) Discontinuous SDS-PAGE (reduced) with 5% enrichment gel and 15% separation gel.

Reconstitution

We recommend that this vial be briefly centrifuged prior to opening to bring the contents to the bottom. Please reconstitute protein in deionized sterile water to a concentration of 0.1-1.0 mg/mL. We recommend to add 5-50% of glycerol (final concentration) and aliquot for long-term storage at -20°C/-80°C. Our default final concentration of glycerol is 50%. Customers could use it as reference.

Shelf Life

The shelf life is related to many factors, storage state, buffer ingredients, storage temperature and the stability of the protein itself. Generally, the shelf life of liquid form is 6 months at -20°C/-80°C. The shelf life of lyophilized form is 12 months at -20°C/-80°C.