

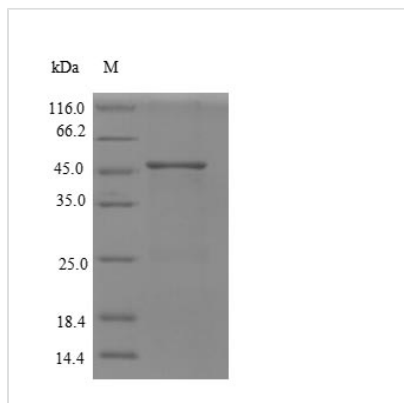


# Recombinant Human Replication protein A 32 kDa subunit (RPA2), partial

<b>Product Code</b>	CSB-EP020089HU1
<b>Relevance</b>	As part of the heterotrimeric replication protein A complex (RPA/RP-A), binds and stabilizes single-stranded DNA intermediates, that form during DNA replication or upon DNA stress. It prevents their reannealing and in parallel, recruits and activates different proteins and complexes involved in DNA metabolism. Thereby, it plays an essential role both in DNA replication and the cellular response to DNA damage. In the cellular response to DNA damage, the RPA complex controls DNA repair and DNA damage checkpoint activation. Through recruitment of ATRIP activates the ATR kinase a master regulator of the DNA damage response. It is required for the recruitment of the DNA double-strand break repair factors RAD51 and RAD52 to chromatin in response to DNA damage. Also recruits to sites of DNA damage proteins like XPA and XPG that are involved in nucleotide excision repair and is required for this mechanism of DNA repair. Plays also a role in base excision repair (BER) probably through interaction with UNG. Through RFD3 may activate CHEK1 and play a role in replication checkpoint control. Also recruits SMARCAL1/HARP, which is involved in replication fork restart, to sites of DNA damage. May also play a role in telomere maintenance
<b>Abbreviation</b>	Recombinant Human RPA2 protein, partial
<b>Storage</b>	The shelf life is related to many factors, storage state, buffer ingredients, storage temperature and the stability of the protein itself. Generally, the shelf life of liquid form is 6 months at -20°C/-80°C. The shelf life of lyophilized form is 12 months at -20°C/-80°C.
<b>Uniprot No.</b>	P15927
<b>Alias</b>	Replication factor A protein 2 ;RF-A protein 2Replication protein A 34 kDa subunit ;RP-A p34
<b>Product Type</b>	Recombinant Protein
<b>Immunogen Species</b>	Homo sapiens (Human)
<b>Purity</b>	Greater than 90% as determined by SDS-PAGE.
<b>Sequence</b>	MWNSGFESYGSSSYGGAGGYTQSPGGFGSPAPSQAEKKSRRARAQHIVPCTI SQLLSATLVDEVFRIGNVEISQVTIVGIIRHAEKAPTNIYKIDDMTAAPMDVRQ WVDTDDTSSENTVPPETYVKVAGHLRSFQNKKSLVAFKIMPLEDMNEFTTHI LEVINAHMVLSKANSQPSAGRAPISNPGMSEAGNFGGNSFMPANGLTVAQNQ VLNLKACPRPEGLNFQDLKNQLKHMSSVSSIKQAVDFLSNEGHIYSTVDDDDHFK ST
<b>Research Area</b>	Epigenetics and Nuclear Signaling
<b>Source</b>	E.coli
<b>Target Names</b>	RPA2



<b>Expression Region</b>	1-267aa
<b>Notes</b>	Repeated freezing and thawing is not recommended. Store working aliquots at 4°C for up to one week.
<b>Tag Info</b>	N-terminal GST-tagged
<b>Mol. Weight</b>	55.9kDa
<b>Protein Length</b>	Partial

**Image**


(Tris-Glycine gel) Discontinuous SDS-PAGE (reduced) with 5% enrichment gel and 15% separation gel.

**Shelf Life**

The shelf life is related to many factors, storage state, buffer ingredients, storage temperature and the stability of the protein itself. Generally, the shelf life of liquid form is 6 months at -20°C/-80°C. The shelf life of lyophilized form is 12 months at -20°C/-80°C.