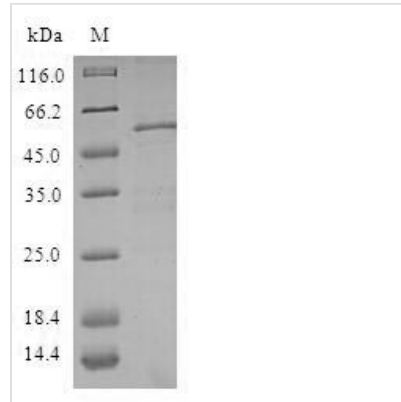




Recombinant Human ZW10 interactor (ZWINT)

Product Code	CSB-EP527261HU
Relevance	Part of the MIS12 complex, which is required for kinetochore formation and spindle checkpoint activity. Required to target ZW10 to the kinetochore at prometaphase.
Abbreviation	Recombinant Human ZWINT protein
Storage	The shelf life is related to many factors, storage state, buffer ingredients, storage temperature and the stability of the protein itself. Generally, the shelf life of liquid form is 6 months at -20°C/-80°C. The shelf life of lyophilized form is 12 months at -20°C/-80°C.
Uniprot No.	O95229
Alias	ZW10-interacting protein 1
Product Type	Recombinant Protein
Immunogen Species	Homo sapiens (Human)
Purity	≥ 90% as determined by SDS-PAGE.
Sequence	MEAAETEAEAAALEVLAEVAGILEPVGLQEEAELPAKILVEFVVDSQKKDKLLC SQLQVADFLQNILAQEDTAKGLDPLASEDTSRQKAIAAKEQWKELKATYREHV EAIKIGLTKALTMEEAQRKRTLREAFEQLQAKKQMAMEKRRAVQNQWQLQ QEKHLQHAEVSAEVRERKTGTQQELDGVFQKLGNLKQQAEQERDKLQRYQ TFLQLLYTLQGKLLFPEAEAEAENLPDDKPQQPTRPQEQSTGDTMGRDPGVS FKAVGLQPAGDVNLP
Research Area	Cell Biology
Source	E.coli
Target Names	ZWINT
Protein Names	Recommended name: ZW10 interactor Alternative name(s): ZW10-interacting protein 1 Short name= Zwint-1
Expression Region	1-277aa
Notes	Repeated freezing and thawing is not recommended. Store working aliquots at 4°C for up to one week.
Tag Info	N-terminal GST-tagged
Mol. Weight	58.2kDa
Protein Length	Full Length of BC020979
Image	



(Tris-Glycine gel) Discontinuous SDS-PAGE (reduced) with 5% enrichment gel and 15% separation gel.

Reconstitution

We recommend that this vial be briefly centrifuged prior to opening to bring the contents to the bottom. Please reconstitute protein in deionized sterile water to a concentration of 0.1-1.0 mg/mL. We recommend to add 5-50% of glycerol (final concentration) and aliquot for long-term storage at -20°C/-80°C. Our default final concentration of glycerol is 50%. Customers could use it as reference.

Shelf Life

The shelf life is related to many factors, storage state, buffer ingredients, storage temperature and the stability of the protein itself. Generally, the shelf life of liquid form is 6 months at -20°C/-80°C. The shelf life of lyophilized form is 12 months at -20°C/-80°C.