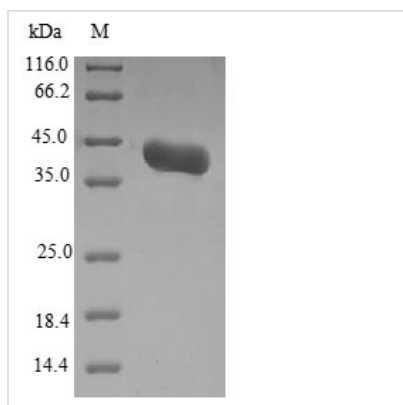




Recombinant *Candida albicans* Agglutinin-like protein 3 (ALS3), partial

Product Code	CSB-EP527942CZF
Relevance	Cell surface adhesion protein which mediates both yeast-to-host tissue adherence and yeast aggregation. Plays an important role in the pathogenesis of <i>C.albicans</i> infections. Necessary for <i>C.albicans</i> to bind to N-cadherin on endothelial cells and E-cadherin on oral epithelial cells and subsequent endocytosis by these cells
Abbreviation	Recombinant <i>Candida albicans</i> ALS3 protein, partial
Storage	The shelf life is related to many factors, storage state, buffer ingredients, storage temperature and the stability of the protein itself. Generally, the shelf life of liquid form is 6 months at -20°C/-80°C. The shelf life of lyophilized form is 12 months at -20°C/-80°C.
Uniprot No.	O74623
Alias	3D9 antigen Adhesin 3
Product Type	Recombinant Protein
Immunogen Species	<i>Candida albicans</i> (Yeast)
Purity	Greater than 90% as determined by SDS-PAGE.
Sequence	VSVETESSTVTTAQTNPSVPTTESEVVFTTKGNNENGPYESPSTNVKSSMDE NSEFTTSTAASTSTDIENETIATTGSVEASSPISSSADETTTVTTTAESTSVIEQ PTNNGGGKAPSATSSPSTTTTANNDVITGTTSTNQSQSQSQYNSDTQQTT LSQQMTSSLVSLHMLTTFDGSQSVIQHSTWLCGLITLLSLFI
Research Area	others
Source	<i>E.coli</i>
Target Names	ALS3
Protein Names	Recommended name: Agglutinin-like protein 3
Expression Region	918-1119aa
Notes	Repeated freezing and thawing is not recommended. Store working aliquots at 4°C for up to one week.
Tag Info	N-terminal 10xHis-B2M-tagged and C-terminal Myc-tagged
Mol. Weight	37.9kDa
Protein Length	Partial
Image	



(Tris-Glycine gel) Discontinuous SDS-PAGE (reduced) with 5% enrichment gel and 15% separation gel.

Reconstitution

We recommend that this vial be briefly centrifuged prior to opening to bring the contents to the bottom. Please reconstitute protein in deionized sterile water to a concentration of 0.1-1.0 mg/mL. We recommend to add 5-50% of glycerol (final concentration) and aliquot for long-term storage at -20°C/-80°C. Our default final concentration of glycerol is 50%. Customers could use it as reference.

Shelf Life

The shelf life is related to many factors, storage state, buffer ingredients, storage temperature and the stability of the protein itself. Generally, the shelf life of liquid form is 6 months at -20°C/-80°C. The shelf life of lyophilized form is 12 months at -20°C/-80°C.