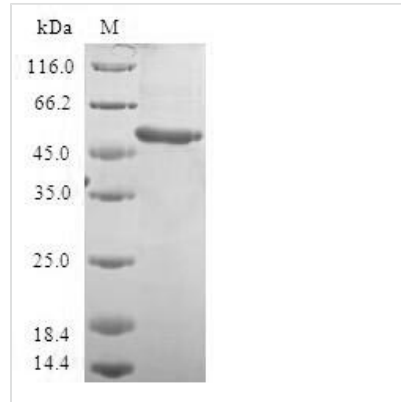




# Recombinant Human Homeobox protein VENTX (VENTX)

<b>Product Code</b>	CSB-EP528513HU
<b>Relevance</b>	VENT homeobox homolog VENT-like homeobox protein 2
<b>Abbreviation</b>	Recombinant Human VENTX protein
<b>Storage</b>	The shelf life is related to many factors, storage state, buffer ingredients, storage temperature and the stability of the protein itself. Generally, the shelf life of liquid form is 6 months at -20°C/-80°C. The shelf life of lyophilized form is 12 months at -20°C/-80°C.
<b>Uniprot No.</b>	O95231
<b>Alias</b>	May be involved in ventralization.
<b>Product Type</b>	Recombinant Protein
<b>Immunogen Species</b>	Homo sapiens (Human)
<b>Purity</b>	≥ 90% as determined by SDS-PAGE.
<b>Sequence</b>	MRLSSSPPRGPQQLSSFGSVDWLSQSSCSGPTHTPRPADFSLGSLPGPGQT SGAREPPQAVSIKEAAGSSNLPAPER TMAGLSKEPNTLRAPRVRTAFTMEQV RTLEGVVFQHHQYLSPLERKRLAREMQLSEVQIKTWFQNR RMKHKRQM QDPQ LHSPFSGSLHAPP AFYSTSSGLANGLQLLCPWAPLSGPQALMLPPGSFWGLC QVAQEALASAGASCCGQPLASHPPTPGRPSLGPALSTGPRGLCAMPQTGDA F
<b>Research Area</b>	Epigenetics and Nuclear Signaling
<b>Source</b>	E.coli
<b>Target Names</b>	VENTX
<b>Protein Names</b>	Recommended name: Homeobox protein VENTX Alternative name(s): VENT homeobox homolog VENT-like homeobox protein 2
<b>Expression Region</b>	1-258aa
<b>Notes</b>	Repeated freezing and thawing is not recommended. Store working aliquots at 4°C for up to one week.
<b>Tag Info</b>	N-terminal GST-tagged
<b>Mol. Weight</b>	54.6kDa
<b>Protein Length</b>	Full Length
<b>Image</b>	



(Tris-Glycine gel) Discontinuous SDS-PAGE (reduced) with 5% enrichment gel and 15% separation gel.

### Reconstitution

We recommend that this vial be briefly centrifuged prior to opening to bring the contents to the bottom. Please reconstitute protein in deionized sterile water to a concentration of 0.1-1.0 mg/mL. We recommend to add 5-50% of glycerol (final concentration) and aliquot for long-term storage at  $-20^{\circ}\text{C}/-80^{\circ}\text{C}$ . Our default final concentration of glycerol is 50%. Customers could use it as reference.

### Shelf Life

The shelf life is related to many factors, storage state, buffer ingredients, storage temperature and the stability of the protein itself. Generally, the shelf life of liquid form is 6 months at  $-20^{\circ}\text{C}/-80^{\circ}\text{C}$ . The shelf life of lyophilized form is 12 months at  $-20^{\circ}\text{C}/-80^{\circ}\text{C}$ .