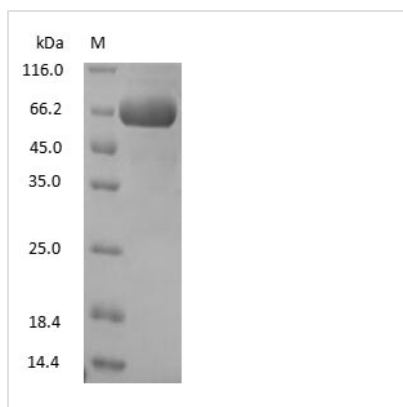




# Conarachin

<b>Product Code</b>	CSB-NP003601PI
<b>Relevance</b>	Seed storage protein.Belongs to the 11S seed storage protein (globulins) family.
<b>Storage</b>	Aliquot and store at -20°C or -80°C. Avoid repeated freeze/thaw cycles.
<b>Tested Applications</b>	ELISA, WB, SDS-PAGE
<b>Form</b>	Liquid
<b>Storage Buffer</b>	PBS, pH 7.4
<b>Alias</b>	N/A
<b>Product Type</b>	Native Protein
<b>Sensitivity</b>	Not test
<b>Purity</b>	>95% (SDS-PAGE)
<b>Sequence</b>	Full length protein
<b>Research Area</b>	Others
<b>Source</b>	Purified from Arachis hypogaea seed
<b>Protein Names</b>	Conarachin

## Image



(Tris-Glycine gel) Discontinuous SDS-PAGE (reduced) with 5% enrichment gel and 15% separation gel.