



Mouse Hemoglobin

Product Code CSB-NP004901m

Relevance Hemoglobin is involved in oxygen transport from the lung to the various peripheral tissues. The alpha (HBA) and beta (HBB) loci determine the structure of the 2 types of polypeptide chains in adult Hemoglobin. The normal adult Hemoglobin tetramer consists of two alpha chains and two beta chains. Mutant beta globin causes sickle cell anemia. Absence of beta chain causes beta zero thalassemia. Reduced amounts of detectable beta globin causes beta plus thalassemia.

Storage Aliquot and store at -20°C or -80°C. Avoid repeated freeze/thaw cycles.

Tested Applications ELISA, WB, SDS-PAGE

Form Liquid

Storage Buffer PBS, pH 7.4

Alias Haemoglobin,Hb

Product Type Native Protein

Sensitivity Not test

Purity >95% (SDS-PAGE)

Sequence Full length protein

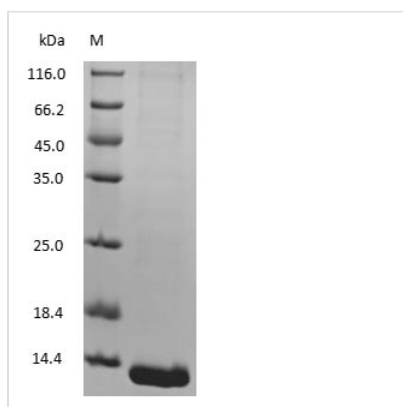
Lead Time 1 week

Research Area Cardiovascular

Source Purified from Mouse erythrocytes

Protein Names Mouse Hemoglobin

Image



(Tris-Glycine gel) Discontinuous SDS-PAGE (reduced) with 5% enrichment gel and 15% separation gel.