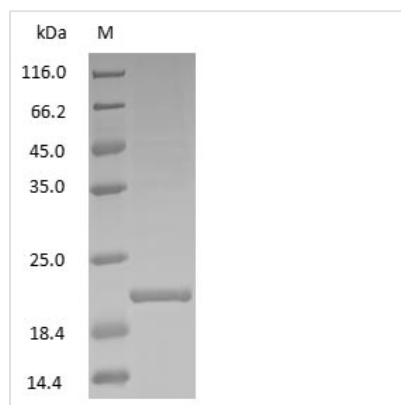




# Immobilized Papain

<b>Product Code</b>	CSB-NP005501PI
<b>Relevance</b>	Papain is a nonspecific, cysteine-endopeptidase isolated from papaya latex that is used in a wide variety of applications. When IgG molecules are incubated with papain in the presence of cysteine, one or more peptide bonds in the hinge region are split, producing three fragments of similar size: two Fab fragments and one Fc fragment. The Fc fragments can be separated from the Fab fragments using immobilized Protein A or by ion exchange chromatography.
<b>Storage</b>	Aliquot and store at -20°C or -80°C. Avoid repeated freeze/thaw cycles.
<b>Tested Applications</b>	FuncS
<b>Form</b>	Liquid
<b>Storage Buffer</b>	PBS, pH 7.4
<b>Alias</b>	N/A
<b>Product Type</b>	Native Protein
<b>Sensitivity</b>	Not test
<b>Purity</b>	>95% (SDS-PAGE)
<b>Sequence</b>	Full length protein
<b>Research Area</b>	Cell Biology
<b>Source</b>	Purified from Papaya latex
<b>Protein Names</b>	Immobilized Papain

## Image



(Tris-Glycine gel) Discontinuous SDS-PAGE (reduced) with 5% enrichment gel and 15% separation gel.