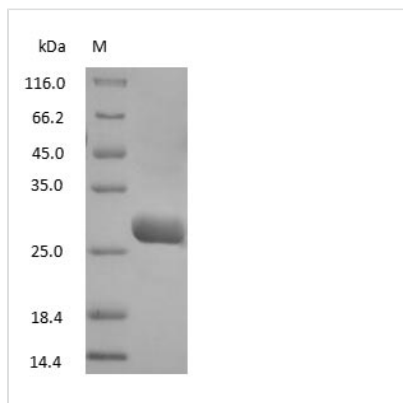




Goat IgG Fab fragment

Product Code	CSB-NP005601G
Relevance	The fragment antigen-binding (Fab fragment) is a region on an antibody that binds to antigens. It is composed of one constant and one variable domain of each of the heavy and the light chain. These domains shape the paratope — the antigen-binding site — at the amino terminal end of the monomer. The two variable domains bind the epitope on their specific antigens.
Storage	Aliquot and store at -20°C or -80°C. Avoid repeated freeze/thaw cycles.
Tested Applications	ELISA, WB, SDS-PAGE
Form	Liquid
Storage Buffer	PBS, pH 7.4
Alias	Fragment antigen-binding
Product Type	Native Protein
Sensitivity	Not test
Purity	≥95% (SDS-PAGE)
Sequence	Full length protein
Research Area	Immunology
Source	Goat serum IgG digested with papain
Protein Names	Goat IgG Fab fragment

Image



(Tris-Glycine gel) Discontinuous SDS-PAGE (reduced) with 5% enrichment gel and 15% separation gel.