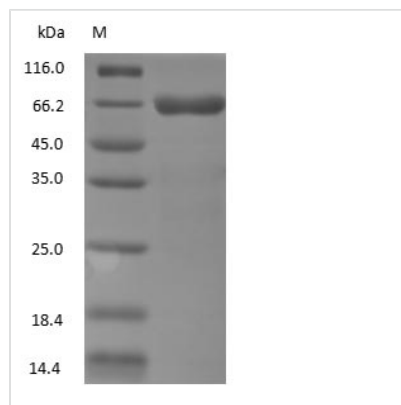




Mouse Serum Albumin

Product Code	CSB-NP000801m
Relevance	Serum albumin, the main protein of plasma, has a good binding capacity for water, Ca(2+), Na(+), K(+), fatty acids, hormones, bilirubin and drugs. Its main function is the regulation of the colloidal osmotic pressure of blood. Major zinc transporter in plasma, typically binds about 80% of all plasma zinc.
Storage	Aliquot and store at -20°C or -80°C. Avoid repeated freeze/thaw cycles.
Tested Applications	ELISA, WB, SDS-PAGE
Form	Liquid
Storage Buffer	PBS, pH 7.4
Alias	N/A
Product Type	Native Protein
Sensitivity	Not test
Purity	>95% (SDS-PAGE)
Sequence	Full length protein
Research Area	Cardiovascular/Stem Cells Lineage/Cancer
Source	Purified from Mouse serum
Protein Names	Mouse Serum Albumin

Image



(Tris-Glycine gel) Discontinuous SDS-PAGE (reduced) with 5% enrichment gel and 15% separation gel.