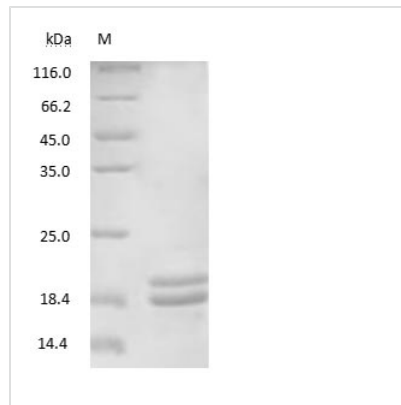




# Arachis hypogaea 2S protein

|                            |   |
|----------------------------|---|
| <b>Product Code</b>        | CSB-NP007301PI  |
| <b>Relevance</b>           | N/A   |
| <b>Storage</b>             | Aliquot and store at -20°C or -80°C. Avoid repeated freeze/thaw cycles. |
| <b>Tested Applications</b> | ELISA, WB, SDS-PAGE   |
| <b>Form</b>                | Liquid  |
| <b>Storage Buffer</b>      | PBS, pH 7.4   |
| <b>Alias</b>               | N/A   |
| <b>Product Type</b>        | Native Protein  |
| <b>Sensitivity</b>         | Not test  |
| <b>Purity</b>              | >95% (SDS-PAGE)   |
| <b>Sequence</b>            | Full length protein   |
| <b>Research Area</b>       | Others  |
| <b>Source</b>              | Purified from Arachis hypogaea seed                                     |
| <b>Protein Names</b>       | Arachis hypogaea 2S protein   |

## Image



(Tris-Glycine gel) Discontinuous SDS-PAGE (reduced) with 5% enrichment gel and 15% separation gel.