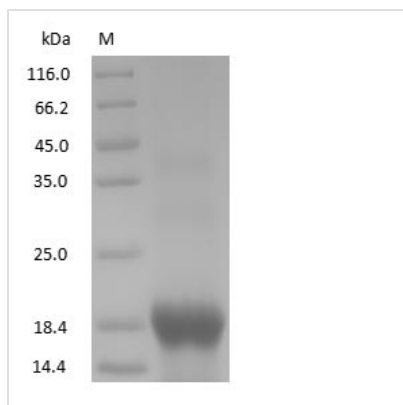




Human Myoglobin protein

Product Code	CSB-NP079141h
Relevance	Serves as a reserve supply of oxygen and facilitates the movement of oxygen within muscles. Belongs to the globin family.
Storage	Aliquot and store at -20°C or -80°C. Avoid repeated freeze/thaw cycles.
Tested Applications	ELISA, WB, SDS-PAGE. Latex enhanced turbidimetric immunoassay (LETIA), immunogen and other possible
Form	Liquid
Storage Buffer	20 mM Tris-HCl, 0.5 M NaCl, pH 8.0
Alias	N/A
Product Type	Native Protein
Sensitivity	Not test
Purity	>95% (SDS-PAGE)
Sequence	Full length protein
Research Area	Cardiovascular
Source	Purified from Human heart tissue
Protein Names	Human Myoglobin protein

Image



(Tris-Glycine gel) Discontinuous SDS-PAGE (reduced) with 5% enrichment gel and 15% separation gel.