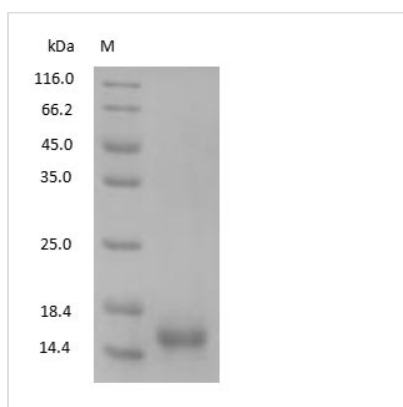




Human Cystatin-C protein

Product Code	CSB-NP061941h
Relevance	As an inhibitor of cysteine proteinases, this protein is thought to serve an important physiological role as a local regulator of this enzyme activity. Expressed in submandibular and sublingual saliva but not in parotid saliva (at protein level). Expressed in various body fluids, such as the cerebrospinal fluid and plasma. Expressed in highest levels in the epididymis, vas deferens, brain, thymus, and ovary and the lowest in the submandibular gland.
Storage	Aliquot and store at -20°C or -80°C. Avoid repeated freeze/thaw cycles.
Tested Applications	ELISA, WB, SDS-PAGE. Latex enhanced turbidimetric immunoassay (LETIA), immunogen and other possible
Form	Liquid
Storage Buffer	20 mM Tris-HCl, 0.5 M NaCl, pH 8.0
Alias	N/A
Product Type	Native Protein
Sensitivity	Not test
Purity	>95% (SDS-PAGE)
Sequence	Full length protein
Research Area	Tags & Cell Markers
Source	Purified from Human urine
Protein Names	Human Cystatin-C protein

Image



(Tris-Glycine gel) Discontinuous SDS-PAGE (reduced) with 5% enrichment gel and 15% separation gel.