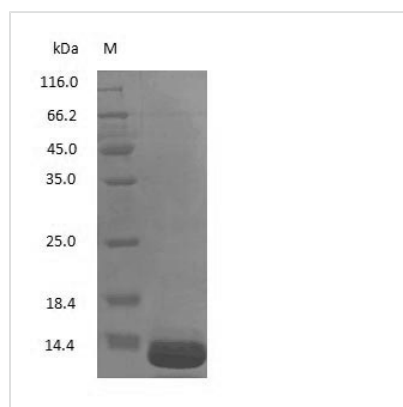




Human Beta-2-microglobulin protein

Product Code	CSB-NP057841h
Relevance	Component of the class I major histocompatibility complex (MHC). Involved in the presentation of peptide antigens to the immune system. Defects in B2M are the cause of hypercatabolic hypoproteinemia (HYCATHYP). Affected individuals show marked reduction in serum concentrations of immunoglobulin and albumin, probably due to rapid degradation.
Storage	Aliquot and store at -20°C or -80°C. Avoid repeated freeze/thaw cycles.
Tested Applications	ELISA, WB, SDS-PAGE. Latex enhanced turbidimetric immunoassay (LETIA), immunogen and other possible
Form	Liquid
Storage Buffer	PBS, pH 7.4
Alias	N/A
Product Type	Native Protein
Sensitivity	Not test
Purity	>95% (SDS-PAGE)
Sequence	Full length protein
Research Area	Cardiovascular
Source	Purified from Human urine
Protein Names	Human Beta-2-microglobulin protein

Image



(Tris-Glycine gel) Discontinuous SDS-PAGE (reduced) with 5% enrichment gel and 15% separation gel.