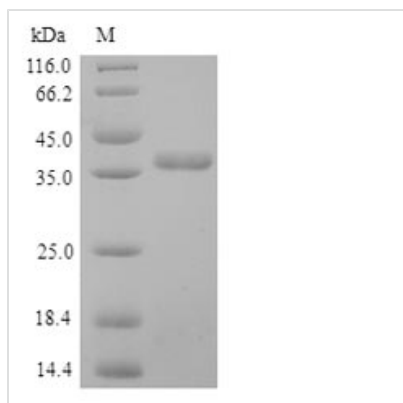


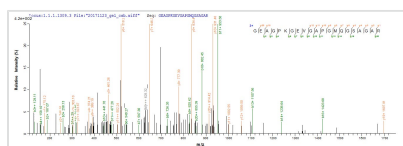


# Recombinant Human Pulmonary surfactant-associated protein D (SFTPD)

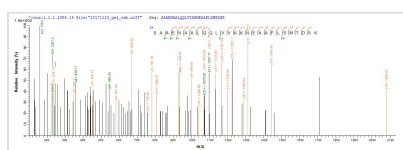
<b>Product Code</b>	CSB-YP021175HU
<b>Relevance</b>	Contributes to the lung's defense against inhaled microorganisms, organic antigens and toxins. Interacts with compounds such as bacterial lipopolysaccharides, oligosaccharides and fatty acids and modulates leukocyte action in immune response. May participate in the Extracellular domain reorganization or turnover of pulmonary surfactant. Binds strongly maltose residues and to a lesser extent other alpha-glucosyl moieties.
<b>Abbreviation</b>	Recombinant Human SFTPD protein
<b>Storage</b>	The shelf life is related to many factors, storage state, buffer ingredients, storage temperature and the stability of the protein itself. Generally, the shelf life of liquid form is 6 months at -20°C/-80°C. The shelf life of lyophilized form is 12 months at -20°C/-80°C.
<b>Uniprot No.</b>	P35247
<b>Alias</b>	Collectin-7 Lung surfactant protein D
<b>Product Type</b>	Recombinant Protein
<b>Immunogen Species</b>	Homo sapiens (Human)
<b>Purity</b>	≥ 90% as determined by SDS-PAGE.
<b>Sequence</b>	AEMKTYSHRTMPSACTLVMCSSVESGLPGRDGRDREGPRGEKGDPLPG AAGQAGMPGQAGPVGPKGDNGSVGEPGPKGDTGPSGPPGPPGVGPAGR EGPLGKQGNIGPQGKPGPKGEAGPKGEVGAAPGMQGSAGARGLAGPKGERG VPERGVPGNTGAAGSAGAMGPQGSPGARGPPGLKGDKGIPGDKGAKGES GLPDVASLRQQVEALQGQVQHLQAAFSQYKKVELFPNGQSVGEKIFKTAGFV KPFTEAQLLCTQAGGQLASPRSAENAALQQLVVAKNEAAFLSMTDSKTEGK FTYPTGESLVYSNWAPGEPNDDGGSEDCVEIF
<b>Research Area</b>	Cancer
<b>Source</b>	Yeast
<b>Target Names</b>	SFTPD
<b>Protein Names</b>	Recommended name: Pulmonary surfactant-associated protein D Short name= PSP-D Short name= SP-D Alternative name(s): Collectin-7 Lung surfactant protein D
<b>Expression Region</b>	21–375aa
<b>Notes</b>	Repeated freezing and thawing is not recommended. Store working aliquots at 4°C for up to one week.
<b>Tag Info</b>	N-terminal 6xHis-tagged
<b>Mol. Weight</b>	35.2kDa


**Protein Length**
**Full Length of Mature Protein**
**Image**


(Tris-Glycine gel) Discontinuous SDS-PAGE (reduced) with 5% enrichment gel and 15% separation gel.



Based on the SEQUEST from database of Yeast host and target protein, the LC-MS/MS Analysis result of CSB-YP021175HU could indicate that this peptide derived from Yeast-expressed Homo sapiens (Human) SFTPD.



Based on the SEQUEST from database of Yeast host and target protein, the LC-MS/MS Analysis result of CSB-YP021175HU could indicate that this peptide derived from Yeast-expressed Homo sapiens (Human) SFTPD.

**Reconstitution**

We recommend that this vial be briefly centrifuged prior to opening to bring the contents to the bottom. Please reconstitute protein in deionized sterile water to a concentration of 0.1-1.0 mg/mL. We recommend to add 5-50% of glycerol (final concentration) and aliquot for long-term storage at -20°C/-80°C. Our default final concentration of glycerol is 50%. Customers could use it as reference.

**Shelf Life**

The shelf life is related to many factors, storage state, buffer ingredients, storage temperature and the stability of the protein itself. Generally, the shelf life of liquid form is 6 months at -20°C/-80°C. The shelf life of lyophilized form is 12 months at -20°C/-80°C.