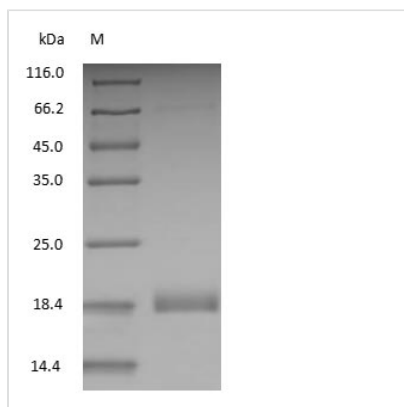




# Bovine Milk $\beta$ -Lactoglobulin

<b>Product Code</b>	CSB-NP002801B
<b>Relevance</b>	$\beta$ -Lactoglobulin is the major whey protein of cow and sheep's milk (~3 g/l), and is also present in many other mammalian species; a notable exception being humans. Bovine $\beta$ -lactoglobulin is a relatively small protein of 162 residues, with an 18.4 kDa molecular weight. In physiological conditions it is predominantly dimeric, but dissociates to a monomer below about pH 3. Nevertheless, its native state remains fairly intact at lower pH values, as determined using NMR.
<b>Storage</b>	Aliquot and store at -20°C or -80°C. Avoid repeated freeze/thaw cycles.
<b>Tested Applications</b>	ELISA, WB, SDS-PAGE
<b>Form</b>	Liquid
<b>Storage Buffer</b>	PBS, pH 7.4
<b>Product Type</b>	Native Proteins
<b>Sensitivity</b>	Not test
<b>Purity</b>	>95% (SDS-PAGE)
<b>Sequence</b>	Full length protein
<b>Lead Time</b>	1 week
<b>Research Area</b>	Cardiovascular
<b>Source</b>	Purified from Bovine milk
<b>Protein Names</b>	Bovine Milk $\beta$ -Lactoglobulin

## Image



(Tris-Glycine gel) Discontinuous SDS-PAGE (reduced) with 5% enrichment gel and 15% separation gel.