



Recombinant Mouse SLAM family member 7 (Slamf7), partial

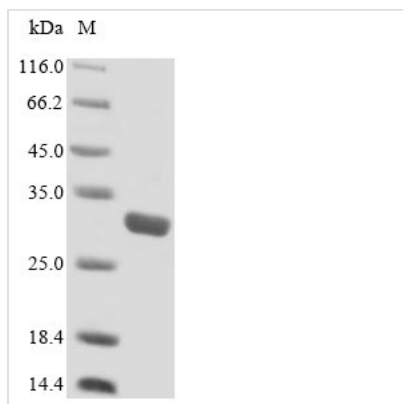
Product Code	CSB-EP021369MO1
Relevance	Self-ligand receptor of the signaling lymphocytic activation molecule (SLAM) family. SLAM receptors triggered by homo- or heterotypic cell-cell interactions are modulating the activation and differentiation of a wide variety of immune cells and thus are involved in the regulation and interconnection of both innate and adaptive immune response. Activities are controlled by presence or absence of small cytoplasmic adapter proteins, SH2D1A/SAP and/or SH2D1B/EAT-2. Mediates natural killer (NK) cell activation through a SH2D1A-independent extracellular signal-regulated ERK-mediated pathway. Positively regulates NK cell functions by a mechanism dependent on the adapter SH2D1B. In addition to heterotypic NK cells-target cells interactions also homotypic interactions between NK cells may contribute to activation. However, in the absence of SH2D1B, inhibits NK cell function. Acts also inhibitory in T-cells. May play a role in lymphocyte adhesion. In LPS-activated monocytes negatively regulates production of proinflammatory cytokines
Abbreviation	Recombinant Mouse Slamf7 protein, partial
Storage	The shelf life is related to many factors, storage state, buffer ingredients, storage temperature and the stability of the protein itself. Generally, the shelf life of liquid form is 6 months at -20°C/-80°C. The shelf life of lyophilized form is 12 months at -20°C/-80°C.
Uniprot No.	Q8BHK6
Product Type	Recombinant Protein
Immunogen Species	Mus musculus (Mouse)
Purity	≥ 85% as determined by SDS-PAGE.
Sequence	SGTLKKVAGALDGSVTFNITEIKVDYVWVWFNTFFLAMVKKDGVTSSQSSNKE RIVFPDGLYSMKLSQLKKNDSGAYRAEIYSTSSQASLIQEYVLHVYKHLSPKV TIDRQSNKNGTCVINLTCSTDQDGENVTYSWKAVGGQDNQFHDGATLSIAWR SGEKDQALTCMARNPVSNSFSTPVFPQKLCEDAATDLTSLRG
Research Area	Immunology
Source	E.coli
Target Names	Slamf7
Protein Names	Leukocyte cell-surface antigen Novel Ly9 CD_antigen: CD319
Expression Region	23-224aa
Notes	Repeated freezing and thawing is not recommended. Store working aliquots at 4°C for up to one week.
Tag Info	N-terminal 6xHis-tagged



Mol. Weight 27.8 kDa

Protein Length Partial

Image



(Tris-Glycine gel) Discontinuous SDS-PAGE (reduced) with 5% enrichment gel and 15% separation gel.

Reconstitution

We recommend that this vial be briefly centrifuged prior to opening to bring the contents to the bottom. Please reconstitute protein in deionized sterile water to a concentration of 0.1-1.0 mg/mL. We recommend to add 5-50% of glycerol (final concentration) and aliquot for long-term storage at -20°C/-80°C. Our default final concentration of glycerol is 50%. Customers could use it as reference.

Shelf Life

The shelf life is related to many factors, storage state, buffer ingredients, storage temperature and the stability of the protein itself. Generally, the shelf life of liquid form is 6 months at -20°C/-80°C. The shelf life of lyophilized form is 12 months at -20°C/-80°C.