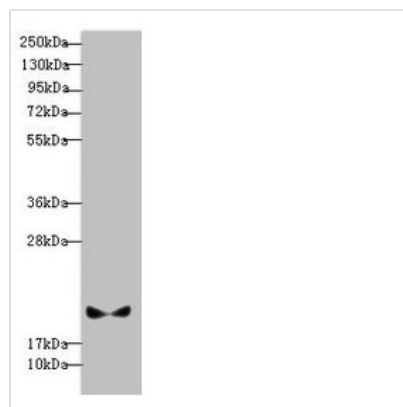




BLOC1S6 Antibody

Product Code	CSB-PA890745DSR1HU
Storage	Upon receipt, store at -20°C or -80°C. Avoid repeated freeze.
Uniprot No.	Q9UL45
Immunogen	Recombinant Human Biogenesis of lysosome-related organelles complex 1 subunit 6 protein (1-170AA)
Raised In	Rabbit
Species Reactivity	Human
Tested Applications	ELISA, WB, IHC; Recommended dilution: WB:1:1000-1:5000, IHC:1:20-1:200
Form	Liquid
Conjugate	Non-conjugated
Storage Buffer	PBS with 0.02% sodium azide, 50% glycerol, pH7.3.
Purification Method	Antigen Affinity Purified
Isotype	IgG
Clonality	Polyclonal
Alias	Biogenesis of lysosome-related organelles complex 1 subunit 6 (BLOC-1 subunit 6) (Pallid protein homolog) (Pallidin) (Syntaxin 13-interacting protein), BLOC1S6, PA PLDN
Immunogen Species	Homo sapiens (Human)
Research Area	Signal Transduction
Target Names	BLOC1S6

Image



Western blot

All lanes: BLOC1S6 antibody at 3.13µg/ml +

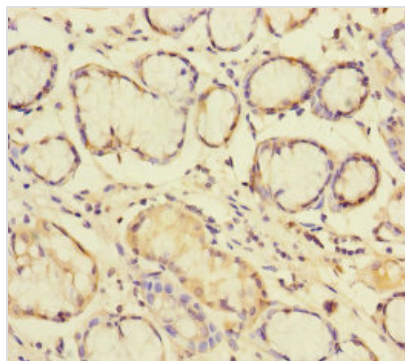
A431 whole cell lysate

Secondary

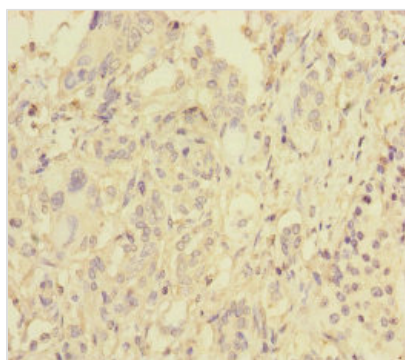
Goat polyclonal to rabbit IgG at 1/10000 dilution

Predicted band size: 20, 9 kDa

Observed band size: 20 kDa



Immunohistochemistry of paraffin-embedded human gastric cancer using CSB-PA890745DSR1HU at dilution of 1:100



Immunohistochemistry of paraffin-embedded human pancreatic cancer using CSB-PA890745DSR1HU at dilution of 1:100

Usage

For Research Use Only. Not for use in diagnostic or therapeutic procedures.