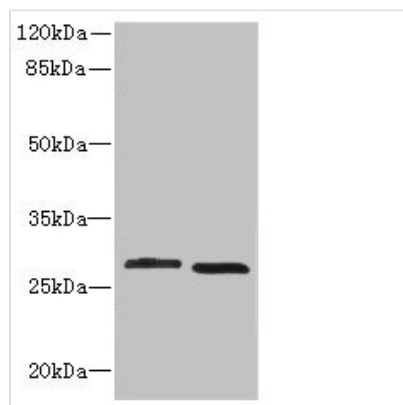




CRYBB1 Antibody

Product Code	CSB-PA006012ESR2HU
Storage	Upon receipt, store at -20°C or -80°C. Avoid repeated freeze.
Uniprot No.	P53674
Immunogen	Recombinant Human Beta-crystallin B1 protein (1-252AA)
Raised In	Rabbit
Species Reactivity	Human, Mouse
Tested Applications	ELISA, WB; Recommended dilution: WB:1:1000-1:5000
Form	Liquid
Conjugate	Non-conjugated
Storage Buffer	PBS with 0.02% sodium azide, 50% glycerol, pH7.3.
Purification Method	Antigen Affinity Purified
Isotype	IgG
Clonality	Polyclonal
Alias	Beta-crystallin B1 (Beta-B1 crystallin), CRYBB1
Immunogen Species	Homo sapiens (Human)
Research Area	Neuroscience
Target Names	CRYBB1

Image



Western blot
 All lanes: CRYBB1 antibody at 1.58µg/ml
 Lane 1: MCF-7 whole cell lysate
 Lane 2: Mouse kidney tissue
 Secondary
 Goat polyclonal to Rabbit IgG at 1/10000 dilution
 Predicted band size: 28 kDa
 Observed band size: 28 kDa