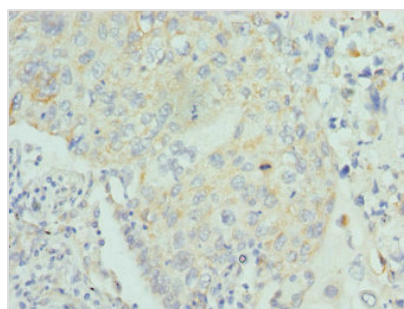




LUM Antibody

Product Code	CSB-PA013234ESR1HU
Storage	Upon receipt, store at -20°C or -80°C. Avoid repeated freeze.
Uniprot No.	P51884
Immunogen	Recombinant Human Lumican protein (19-338AA)
Raised In	Rabbit
Species Reactivity	Human
Tested Applications	ELISA, IHC; Recommended dilution: IHC:1:20-1:200
Form	Liquid
Conjugate	Non-conjugated
Storage Buffer	PBS with 0.02% sodium azide, 50% glycerol, pH7.3.
Purification Method	Antigen Affinity Purified
Isotype	IgG
Clonality	Polyclonal
Alias	Lumican (Keratan sulfate proteoglycan lumican) (KSPG lumican), LUM, LDC SLRR2D
Immunogen Species	Homo sapiens (Human)
Research Area	Cancer
Target Names	LUM

Image



Immunohistochemistry of paraffin-embedded human lung cancer using CSB-PA013234ESR1HU at dilution of 1:100