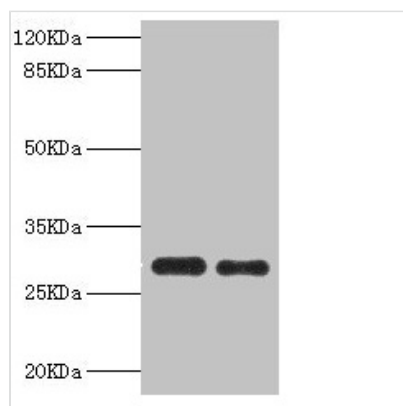




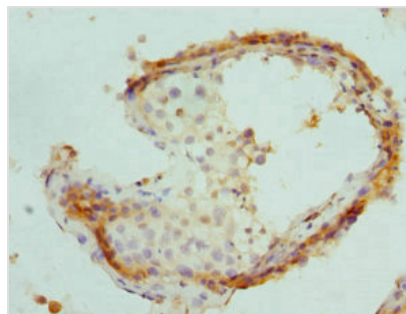
PSME1 Antibody

Product Code	CSB-PA018915DSR1HU
Storage	Upon receipt, store at -20°C or -80°C. Avoid repeated freeze.
Uniprot No.	Q06323
Immunogen	Recombinant Human Proteasome activator complex subunit 1 protein (1-249AA)
Raised In	Rabbit
Species Reactivity	Human, Mouse
Tested Applications	ELISA, WB, IHC, IP; Recommended dilution: WB:1:500-1:2000, IHC:1:20-1:200, IP:1:200-1:2000
Form	Liquid
Conjugate	Non-conjugated
Storage Buffer	PBS with 0.02% sodium azide, 50% glycerol, pH7.3.
Purification Method	Antigen Affinity Purified
Isotype	IgG
Clonality	Polyclonal
Alias	Proteasome activator complex subunit 1 (11S regulator complex subunit alpha) (REG-alpha) (Activator of multicatalytic protease subunit 1) (Interferon gamma up-regulated I-5111 protein) (IGUP I-5111) (Proteasome activator 28 subunit alpha) (PA28a) (PA28alpha), PSME1, IFI5111
Immunogen Species	Homo sapiens (Human)
Research Area	Cell Biology
Target Names	PSME1

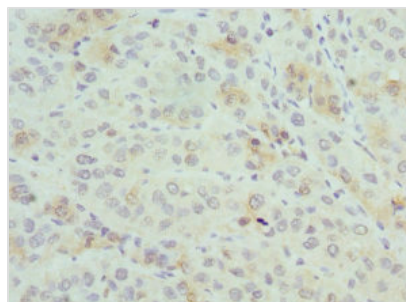
Image



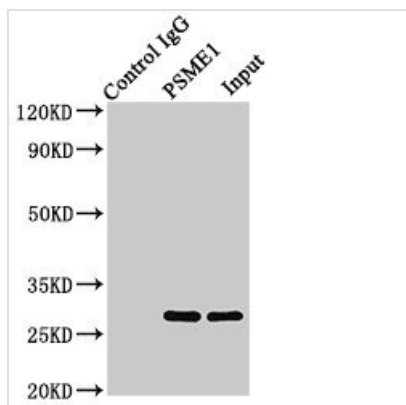
Western blot
 All lanes: PSME1 antibody at 0.75µg/ml
 Lane 1: Mouse liver tissue
 Lane 2: Raji whole cell lysate
 Secondary
 Goat polyclonal to rabbit IgG at 1/10000 dilution
 Predicted band size: 29, 27 kDa
 Observed band size: 29 kDa



Immunohistochemistry of paraffin-embedded human testis tissue using CSB-PA018915DSR1HU at dilution of 1:100



Immunohistochemistry of paraffin-embedded human liver cancer using CSB-PA018915DSR1HU at dilution of 1:100



Immunoprecipitating PSME1 in Jurkat whole cell lysate
 Lane 1: Rabbit control IgG (1µg) instead of CSB-PA018915DSR1HU in Jurkat whole cell lysate. For western blotting, a HRP-conjugated Protein G antibody was used as the secondary antibody (1/2000)
 Lane 2: CSB-PA018915DSR1HU (8µg) + Jurkat whole cell lysate (500µg)
 Lane 3: Jurkat whole cell lysate (10µg)

Usage

For Research Use Only. Not for use in diagnostic or therapeutic procedures.