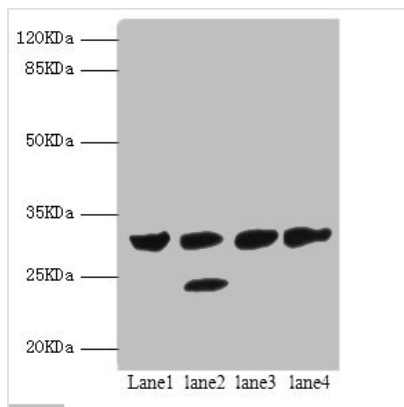




PSME1 Antibody

Product Code	CSB-PA018915DSR2HU
Storage	Upon receipt, store at -20°C or -80°C. Avoid repeated freeze.
Uniprot No.	Q06323
Immunogen	Recombinant Human Proteasome activator complex subunit 1 protein (1-249AA)
Raised In	Rabbit
Species Reactivity	Human, Mouse
Tested Applications	ELISA, WB, IHC; Recommended dilution: WB:1:1000-1:5000, IHC:1:20-1:200
Form	Liquid
Conjugate	Non-conjugated
Storage Buffer	PBS with 0.02% sodium azide, 50% glycerol, pH7.3.
Purification Method	Antigen Affinity Purified
Isotype	IgG
Clonality	Polyclonal
Alias	Proteasome activator complex subunit 1 (11S regulator complex subunit alpha) (REG-alpha) (Activator of multicatalytic protease subunit 1) (Interferon gamma up-regulated I-5111 protein) (IGUP I-5111) (Proteasome activator 28 subunit alpha) (PA28a) (PA28alpha), PSME1, IFI5111
Immunogen Species	Homo sapiens (Human)
Research Area	Cell Biology
Target Names	PSME1

Image



Western blot

All lanes: PSME1 antibody at 1.4µg/ml

Lane 1: Mouse liver tissue

Lane 2: Mouse thymus tissue

Lane 3: Raji whole cell lysate

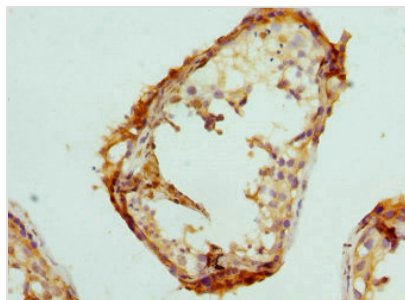
Lane 4: HL60 whole cell lysate

Secondary

Goat polyclonal to rabbit IgG at 1/10000 dilution

Predicted band size: 29, 27 kDa

Observed band size: 29, 25 kDa



Immunohistochemistry of paraffin-embedded human testis tissue using CSB-PA018915DSR2HU at dilution of 1:100

Usage

For Research Use Only. Not for use in diagnostic or therapeutic procedures.