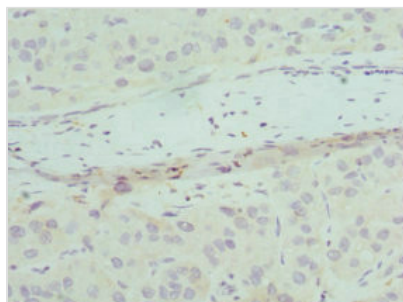




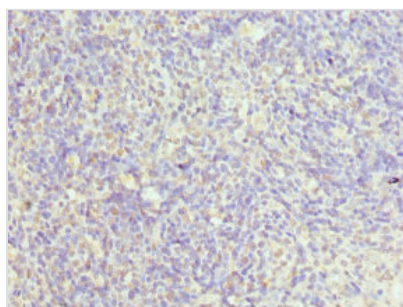
CHMP2B Antibody

Product Code	CSB-PA891990ESR2HU
Storage	Upon receipt, store at -20°C or -80°C. Avoid repeated freeze.
Uniprot No.	Q9UQN3
Immunogen	Recombinant Human Charged multivesicular body protein 2b protein (1-213AA)
Raised In	Rabbit
Species Reactivity	Human
Tested Applications	ELISA, IHC; Recommended dilution: IHC:1:20-1:200
Form	Liquid
Conjugate	Non-conjugated
Storage Buffer	PBS with 0.02% sodium azide, 50% glycerol, pH7.3.
Purification Method	Antigen Affinity Purified
Isotype	IgG
Clonality	Polyclonal
Alias	Charged multivesicular body protein 2b (CHMP2.5) (Chromatin-modifying protein 2b) (CHMP2b) (Vacuolar protein sorting-associated protein 2-2) (Vps2-2) (hVps2-2), CHMP2B
Immunogen Species	Homo sapiens (Human)
Research Area	Signal Transduction
Target Names	CHMP2B

Image



Immunohistochemistry of paraffin-embedded human liver cancer using CSB-PA891990ESR2HU at dilution of 1:100



Immunohistochemistry of paraffin-embedded human thymus tissue using CSB-PA891990ESR2HU at dilution of 1:100