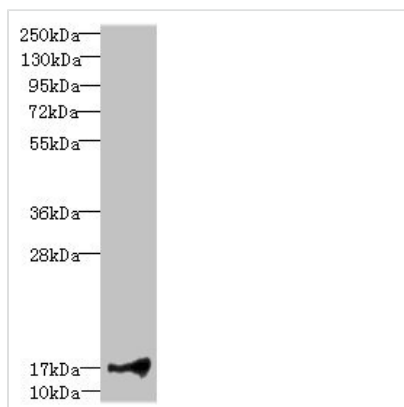




# LITAF Antibody

<b>Product Code</b>	CSB-PA012985ESR1HU
<b>Storage</b>	Upon receipt, store at -20°C or -80°C. Avoid repeated freeze.
<b>Uniprot No.</b>	Q99732
<b>Immunogen</b>	Recombinant Human Lipopolysaccharide-induced tumor necrosis factor-alpha factor protein (1-161AA)
<b>Raised In</b>	Rabbit
<b>Species Reactivity</b>	Human
<b>Tested Applications</b>	ELISA, WB, IHC; Recommended dilution: WB:1:1000-1:5000, IHC:1:20-1:200
<b>Form</b>	Liquid
<b>Conjugate</b>	Non-conjugated
<b>Storage Buffer</b>	PBS with 0.02% sodium azide, 50% glycerol, pH7.3.
<b>Purification Method</b>	Antigen Affinity Purified
<b>Isotype</b>	IgG
<b>Clonality</b>	Polyclonal
<b>Alias</b>	Lipopolysaccharide-induced tumor necrosis factor-alpha factor (LPS-induced TNF-alpha factor) (Small integral membrane protein of lysosome/late endosome) (p53-induced gene 7 protein), LITAF, PIG7 SIMPLE
<b>Immunogen Species</b>	Homo sapiens (Human)
<b>Research Area</b>	Signal Transduction
<b>Target Names</b>	LITAF

## Image



Western blot

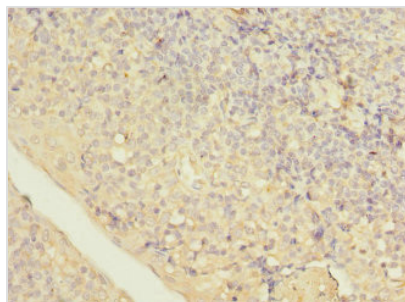
All lanes: LITAF antibody at 1.91 μg/ml + HeLa whole cell lysate

Secondary

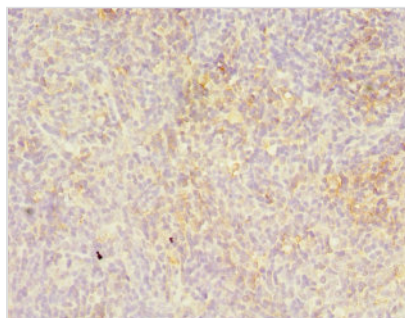
Goat polyclonal to rabbit IgG at 1/10000 dilution

Predicted band size: 18, 24, 16 kDa

Observed band size: 18 kDa



Immunohistochemistry of paraffin-embedded human tonsil tissue using CSB-PA012985ESR1HU at dilution of 1:100



Immunohistochemistry of paraffin-embedded human thymus tissue using CSB-PA012985ESR1HU at dilution of 1:100

## Usage

For Research Use Only. Not for use in diagnostic or therapeutic procedures.