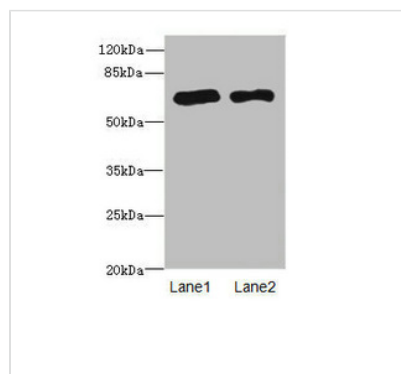




PPM1D Antibody

Product Code	CSB-PA018491ESR1HU
Storage	Upon receipt, store at -20°C or -80°C. Avoid repeated freeze.
Uniprot No.	O15297
Immunogen	Recombinant Human Protein phosphatase 1D protein (1-250AA)
Raised In	Rabbit
Species Reactivity	Human, Rat
Tested Applications	ELISA, WB, IHC; Recommended dilution: WB:1:1000-1:5000, IHC:1:20-1:200
Form	Liquid
Conjugate	Non-conjugated
Storage Buffer	PBS with 0.02% sodium azide, 50% glycerol, pH7.3.
Purification Method	Antigen Affinity Purified
Isotype	IgG
Clonality	Polyclonal
Alias	Protein phosphatase 1D (EC 3.1.3.16) (Protein phosphatase 2C isoform delta) (PP2C-delta) (Protein phosphatase magnesium-dependent 1 delta) (p53-induced protein phosphatase 1), PPM1D, WIP1
Immunogen Species	Homo sapiens (Human)
Research Area	Signal Transduction
Target Names	PPM1D

Image



Western blot

All lanes: PPM1D antibody at 2.36µg/ml

Lane 1: Rat gonadal tissue

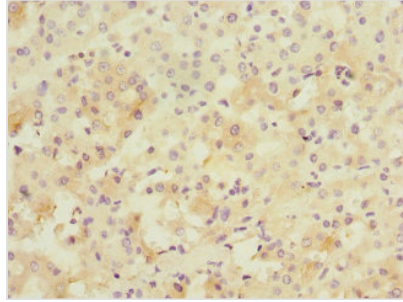
Lane 2: U87 whole cell lysate

Secondary

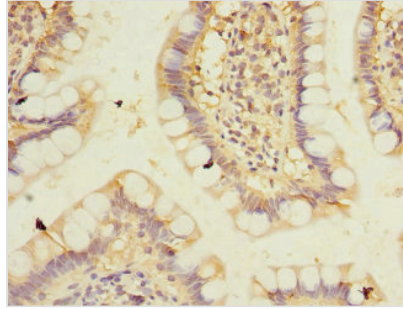
Goat polyclonal to rabbit IgG at 1/10000 dilution

Predicted band size: 67, 48 kDa

Observed band size: 67 kDa



Immunohistochemistry of paraffin-embedded human liver cancer using CSB-PA018491ESR1HU at dilution of 1:100



Immunohistochemistry of paraffin-embedded human small intestine tissue using CSB-PA018491ESR1HU at dilution of 1:100

Usage

For Research Use Only. Not for use in diagnostic or therapeutic procedures.