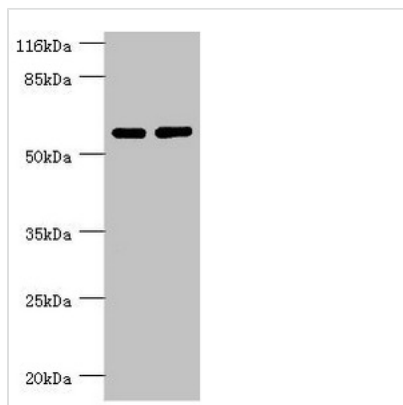




PPP2R5C Antibody

Product Code	CSB-PA619761ESR1HU
Storage	Upon receipt, store at -20°C or -80°C. Avoid repeated freeze.
Uniprot No.	Q13362
Immunogen	Recombinant Human Serine/threonine-protein phosphatase 2A 56 kDa regulatory subunit gamma isoform protein (1-320AA)
Raised In	Rabbit
Species Reactivity	Human
Tested Applications	ELISA, WB, IHC; Recommended dilution: WB:1:1000-1:5000, IHC:1:20-1:200
Form	Liquid
Conjugate	Non-conjugated
Storage Buffer	PBS with 0.02% sodium azide, 50% glycerol, pH7.3.
Purification Method	Antigen Affinity Purified
Isotype	IgG
Clonality	Polyclonal
Alias	Serine/threonine-protein phosphatase 2A 56 kDa regulatory subunit gamma isoform (PP2A B subunit isoform B'-gamma) (PP2A B subunit isoform B56-gamma) (PP2A B subunit isoform PR61-gamma) (PP2A B subunit isoform R5-gamma) (Renal carcinoma antigen NY-REN-29), PPP2R5C, KIAA0044
Immunogen Species	Homo sapiens (Human)
Research Area	Neuroscience
Target Names	PPP2R5C

Image



Western blot

All lanes: PPP2R5C antibody at 1.31µg/ml

Lane 1: MM231 whole cell lysate

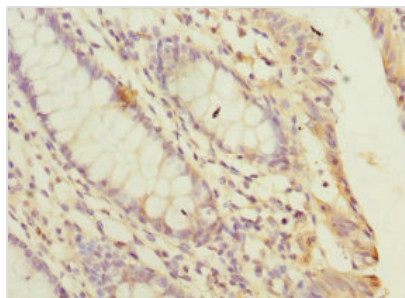
Lane 2: K562 whole cell lysate

Secondary

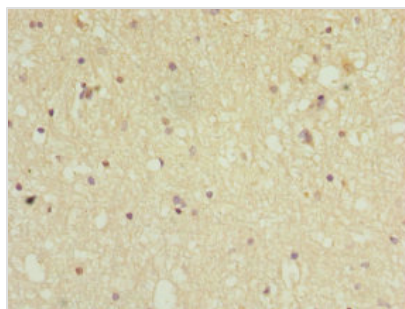
Goat polyclonal to rabbit IgG at 1/10000 dilution

Predicted band size: 62, 53, 57, 63, 65 kDa

Observed band size: 62 kDa



Immunohistochemistry of paraffin-embedded human colon cancer using CSB-PA619761ESR1HU at dilution of 1:100



Immunohistochemistry of paraffin-embedded human brain tissue using CSB-PA619761ESR1HU at dilution of 1:100

Usage

For Research Use Only. Not for use in diagnostic or therapeutic procedures.