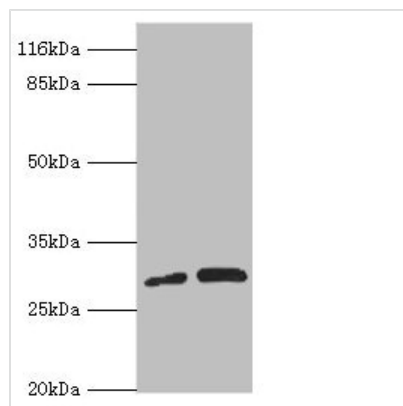




PSMF1 Antibody

Product Code	CSB-PA852882DSR1HU
Storage	Upon receipt, store at -20°C or -80°C. Avoid repeated freeze.
Uniprot No.	Q92530
Immunogen	Recombinant Human Proteasome inhibitor PI31 subunit protein (1-271AA)
Raised In	Rabbit
Species Reactivity	Human
Tested Applications	ELISA, WB, IHC, IF; Recommended dilution: WB:1:500-1:2000, IHC:1:20-1:200, IF:1:50-1:200
Form	Liquid
Conjugate	Non-conjugated
Storage Buffer	PBS with 0.02% sodium azide, 50% glycerol, pH7.3.
Purification Method	Antigen Affinity Purified
Isotype	IgG
Clonality	Polyclonal
Alias	Proteasome inhibitor PI31 subunit (hPI31), PSMF1
Immunogen Species	Homo sapiens (Human)
Research Area	Cell Biology
Target Names	PSMF1

Image



Western blot

All lanes: PSMF1 antibody at 1.28µg/ml

Lane 1: A549 whole cell lysate

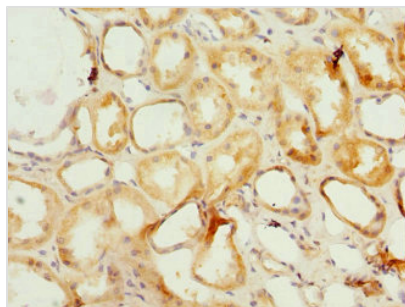
Lane 2: K562 whole cell lysate

Secondary

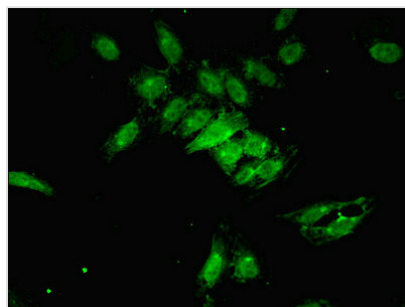
Goat polyclonal to rabbit IgG at 1/10000 dilution

Predicted band size: 30 kDa

Observed band size: 30 kDa



Immunohistochemistry of paraffin-embedded human kidney tissue using CSB-PA852882DSR1HU at dilution of 1:100



Immunofluorescent analysis of HeLa cells using CSB-PA852882DSR1HU at dilution of 1:100 and Alexa Fluor 488-conjugated AffiniPure Goat Anti-Rabbit IgG(H+L)

Usage

For Research Use Only. Not for use in diagnostic or therapeutic procedures.