



TFCP2 Antibody

Product Code	CSB-PA621517DSR1HU
Storage	Upon receipt, store at -20°C or -80°C. Avoid repeated freeze.
Uniprot No.	Q12800
Immunogen	Recombinant Human Alpha-globin transcription factor CP2 protein (1-280AA)
Raised In	Rabbit
Species Reactivity	Human, Mouse
Tested Applications	ELISA, WB, IHC; Recommended dilution: WB:1:1000-1:5000, IHC:1:20-1:200
Form	Liquid
Conjugate	Non-conjugated
Storage Buffer	PBS with 0.02% sodium azide, 50% glycerol, pH7.3.
Purification Method	Antigen Affinity Purified
Isotype	IgG
Clonality	Polyclonal
Alias	Alpha-globin transcription factor CP2 (SAA3 enhancer factor) (Transcription factor LSF), TFCP2, LSF SEF
Immunogen Species	Homo sapiens (Human)
Research Area	Cardiovascular
Target Names	TFCP2

Image



Western blot

All lanes: TFCP2 antibody at 1.34µg/ml

Lane 1: K562 whole cell lysate

Lane 2: Mouse spleen tissue

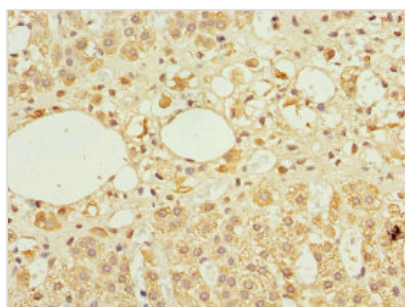
Lane 3: THP-1 whole cell lysate

Secondary

Goat polyclonal to rabbit IgG at 1/10000 dilution

Predicted band size: 58, 52 kDa

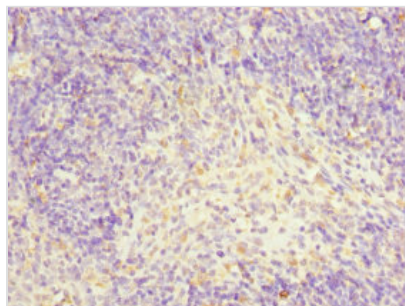
Observed band size: 52 kDa



Immunohistochemistry of paraffin-embedded

human adrenal gland tissue using CSB-

PA621517DSR1HU at dilution of 1:100



Immunohistochemistry of paraffin-embedded human thymus tissue using CSB-PA621517DSR1HU at dilution of 1:100

Usage

For Research Use Only. Not for use in diagnostic or therapeutic procedures.