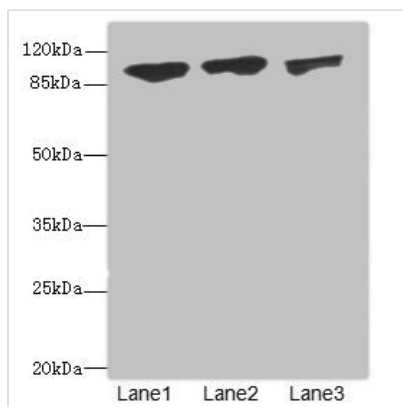




DDX20 Antibody

Product Code	CSB-PA890695DSR2HU
Storage	Upon receipt, store at -20°C or -80°C. Avoid repeated freeze.
Uniprot No.	Q9UHI6
Immunogen	Recombinant Human Probable ATP-dependent RNA helicase DDX20 protein (25-280AA)
Raised In	Rabbit
Species Reactivity	Human
Tested Applications	ELISA, WB, IHC; Recommended dilution: WB:1:1000-1:5000, IHC:1:20-1:200
Form	Liquid
Conjugate	Non-conjugated
Storage Buffer	PBS with 0.02% sodium azide, 50% glycerol, pH7.3.
Purification Method	Antigen Affinity Purified
Isotype	IgG
Clonality	Polyclonal
Alias	Probable ATP-dependent RNA helicase DDX20 (EC 3.6.4.13) (Component of gems 3) (DEAD box protein 20) (DEAD box protein DP 103) (Gemin-3), DDX20, DP103 GEMIN3
Immunogen Species	Homo sapiens (Human)
Research Area	Neuroscience
Target Names	DDX20

Image



Western blot

All lanes: DDX20 antibody at 1.91 μg/ml

Lane 1: 293T whole cell lysate

Lane 2: HepG2 whole cell lysate

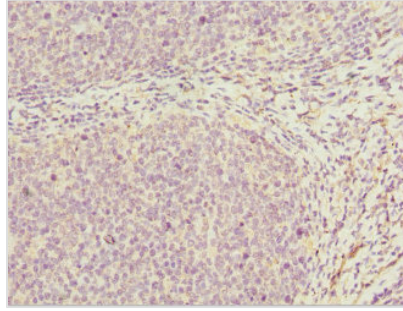
Lane 3: HeLa whole cell lysate

Secondary

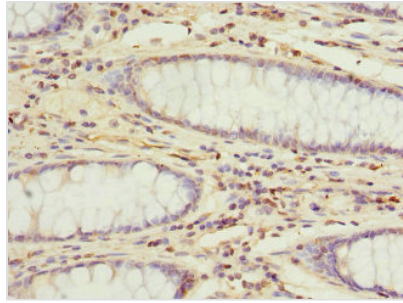
Goat polyclonal to rabbit IgG at 1/10000 dilution

Predicted band size: 93, 15 kDa

Observed band size: 93 kDa



Immunohistochemistry of paraffin-embedded human tonsil tissue using CSB-PA890695DSR2HU at dilution of 1:100



Immunohistochemistry of paraffin-embedded human colon cancer using CSB-PA890695DSR2HU at dilution of 1:100

Usage

For Research Use Only. Not for use in diagnostic or therapeutic procedures.