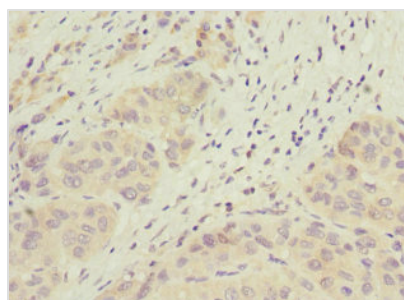




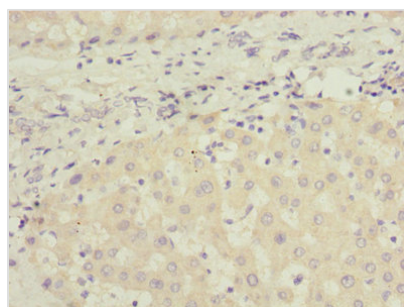
JADE1 Antibody

Product Code	CSB-PA743563ESR1HU
Storage	Upon receipt, store at -20°C or -80°C. Avoid repeated freeze.
Uniprot No.	Q6IE81
Immunogen	Recombinant Human Protein Jade-1 protein (543-842AA)
Raised In	Rabbit
Species Reactivity	Human
Tested Applications	ELISA, IHC; Recommended dilution: IHC:1:20-1:200
Form	Liquid
Conjugate	Non-conjugated
Storage Buffer	PBS with 0.02% sodium azide, 50% glycerol, pH7.3.
Purification Method	Antigen Affinity Purified
Isotype	IgG
Clonality	Polyclonal
Alias	Protein Jade-1 (Jade family PHD finger protein 1) (PHD finger protein 17), JADE1, KIAA1807 PHF17
Immunogen Species	Homo sapiens (Human)
Research Area	Epigenetics and Nuclear Signaling
Target Names	JADE1

Image



Immunohistochemistry of paraffin-embedded human liver cancer using CSB-PA743563ESR1HU at dilution of 1:100



Immunohistochemistry of paraffin-embedded human liver tissue using CSB-PA743563ESR1HU at dilution of 1:100

Usage

For Research Use Only. Not for use in diagnostic or therapeutic procedures.