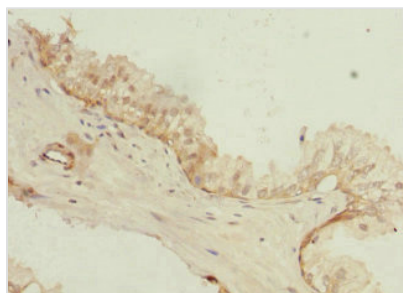




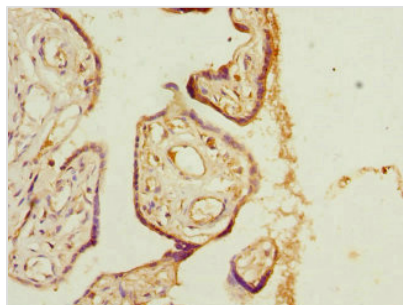
PHLDA2 Antibody

Product Code	CSB-PA687493ESR1HU
Storage	Upon receipt, store at -20°C or -80°C. Avoid repeated freeze.
Uniprot No.	Q53GA4
Immunogen	Recombinant Human Pleckstrin homology-like domain family A member 2 protein (1-152AA)
Raised In	Rabbit
Species Reactivity	Human
Tested Applications	ELISA, IHC; Recommended dilution: IHC:1:20-1:200
Form	Liquid
Conjugate	Non-conjugated
Storage Buffer	PBS with 0.02% sodium azide, 50% glycerol, pH7.3.
Purification Method	Antigen Affinity Purified
Isotype	IgG
Clonality	Polyclonal
Alias	Pleckstrin homology-like domain family A member 2 (Beckwith-Wiedemann syndrome chromosomal region 1 candidate gene C protein) (Imprinted in placenta and liver protein) (Tumor-suppressing STF cDNA 3 protein) (Tumor-suppressing subchromosomal transferable fragment candidate gene 3 protein) (p17-Beckwith-Wiedemann region 1 C) (p17-BWR1C), PHLDA2, BWR1C HLDA2 IPL TSSC3
Immunogen Species	Homo sapiens (Human)
Research Area	Cell Biology
Target Names	PHLDA2

Image



Immunohistochemistry of paraffin-embedded human prostate cancer using CSB-PA687493ESR1HU at dilution of 1:100



Immunohistochemistry of paraffin-embedded human placenta tissue using CSB-PA687493ESR1HU at dilution of 1:100