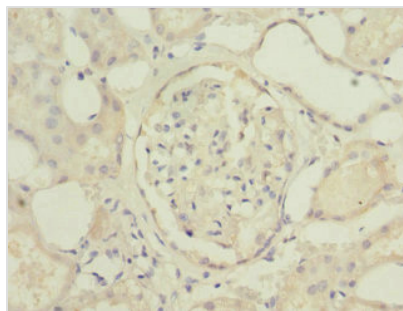




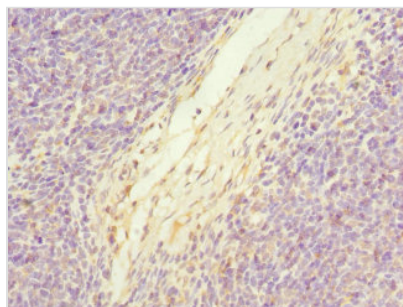
# C19orf48 Antibody

<b>Product Code</b>	CSB-PA740850ESR2HU
<b>Storage</b>	Upon receipt, store at -20°C or -80°C. Avoid repeated freeze.
<b>Uniprot No.</b>	Q6RUI8
<b>Immunogen</b>	Recombinant Human Uncharacterized protein C19orf48 protein (1-117AA)
<b>Raised In</b>	Rabbit
<b>Species Reactivity</b>	Human
<b>Tested Applications</b>	ELISA, IHC, IF; Recommended dilution: IHC:1:20-1:200, IF:1:50-1:200
<b>Form</b>	Liquid
<b>Conjugate</b>	Non-conjugated
<b>Storage Buffer</b>	PBS with 0.02% sodium azide, 50% glycerol, pH7.3.
<b>Purification Method</b>	Antigen Affinity Purified
<b>Isotype</b>	IgG
<b>Clonality</b>	Polyclonal
<b>Alias</b>	Uncharacterized protein C19orf48 (Multidrug resistance-related protein), C19orf48
<b>Immunogen Species</b>	Homo sapiens (Human)
<b>Research Area</b>	Others
<b>Target Names</b>	C19orf48

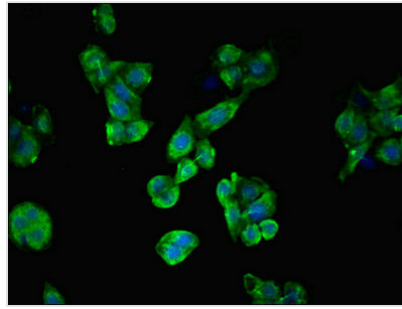
## Image



Immunohistochemistry of paraffin-embedded human kidney tissue using CSB-PA740850ESR2HU at dilution of 1:100



Immunohistochemistry of paraffin-embedded human thymus tissue using CSB-PA740850ESR2HU at dilution of 1:100



Immunofluorescent analysis of PC-3 cells using CSB-PA740850ESR2HU at dilution of 1:100 and Alexa Fluor 488-conjugated AffiniPure Goat Anti-Rabbit IgG(H+L)

---

**Usage**

For Research Use Only. Not for use in diagnostic or therapeutic procedures.