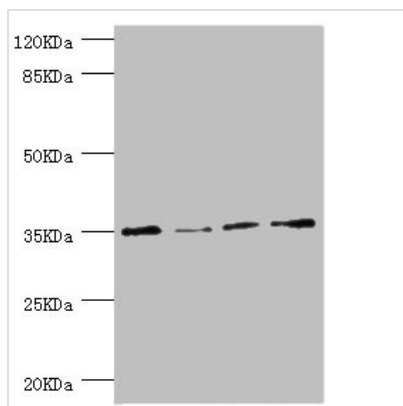




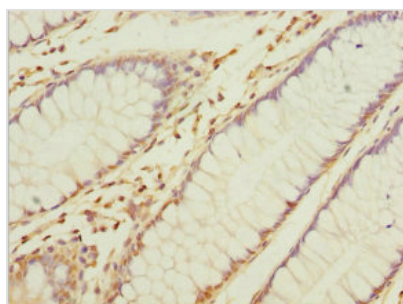
NAPG Antibody

Product Code	CSB-PA860352DSR1HU
Storage	Upon receipt, store at -20°C or -80°C. Avoid repeated freeze.
Uniprot No.	Q99747
Immunogen	Recombinant Human Gamma-soluble NSF attachment protein (1-312AA)
Raised In	Rabbit
Species Reactivity	Human
Tested Applications	ELISA, WB, IHC; Recommended dilution: WB:1:1000-1:5000, IHC:1:20-1:200
Form	Liquid
Conjugate	Non-conjugated
Storage Buffer	PBS with 0.02% sodium azide, 50% glycerol, pH7.3.
Purification Method	Antigen Affinity Purified
Isotype	IgG
Clonality	Polyclonal
Alias	Gamma-soluble NSF attachment protein (SNAP-gamma) (N-ethylmaleimide-sensitive factor attachment protein gamma), NAPG, SNAPG
Immunogen Species	Homo sapiens (Human)
Research Area	Others
Target Names	NAPG

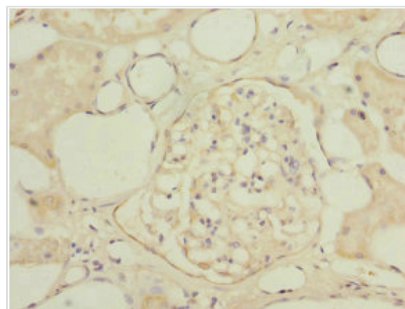
Image



Western blot
 All lanes: NAPG antibody at 1.1 µg/ml
 Lane 1: HepG2 whole cell lysate
 Lane 2: Hela whole cell lysate
 Lane 3: U251 whole cell lysate
 Lane 4: K562 whole cell lysate
 Secondary
 Goat polyclonal to rabbit IgG at 1/10000 dilution
 Predicted band size: 35, 26 kDa
 Observed band size: 35 kDa



Immunohistochemistry of paraffin-embedded human colon cancer using CSB-PA860352DSR1HU at dilution of 1:100



Immunohistochemistry of paraffin-embedded human kidney tissue using CSB-PA860352DSR1HU at dilution of 1:100

Usage

For Research Use Only. Not for use in diagnostic or therapeutic procedures.