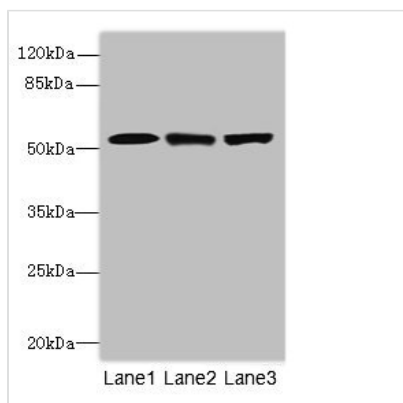




INTS11 Antibody

Product Code	CSB-PA722574ESR2HU
Storage	Upon receipt, store at -20°C or -80°C. Avoid repeated freeze.
Uniprot No.	Q5TA45
Immunogen	Recombinant Human Integrator complex subunit 11 protein (331-600AA)
Raised In	Rabbit
Species Reactivity	Human
Tested Applications	ELISA, WB, IHC; Recommended dilution: WB:1:1000-1:5000, IHC:1:20-1:200
Form	Liquid
Conjugate	Non-conjugated
Storage Buffer	PBS with 0.02% sodium azide, 50% glycerol, pH7.3.
Purification Method	Antigen Affinity Purified
Isotype	IgG
Clonality	Polyclonal
Alias	Integrator complex subunit 11 (Int11) (EC 3.1.27.-) (Cleavage and polyadenylation-specific factor 3-like protein) (CPSF3-like protein) (Protein related to CPSF subunits of 68 kDa) (RC-68), INTS11, CPSF3L RC68
Immunogen Species	Homo sapiens (Human)
Research Area	Epigenetics and Nuclear Signaling
Target Names	INTS11

Image



Western blot

All lanes: CPSF3L antibody at 4.2 μg/ml

Lane 1: Colo320 whole cell lysate

Lane 2: HeLa whole cell lysate

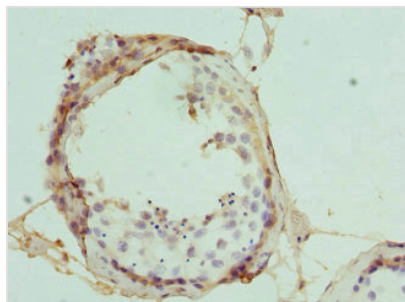
Lane 3: MCF-7 whole cell lysate

Secondary

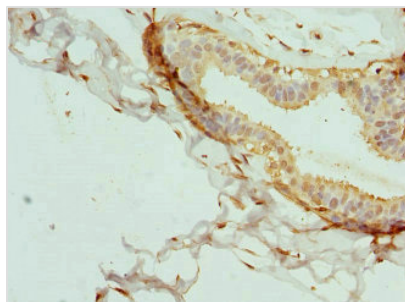
Goat polyclonal to rabbit IgG at 1/10000 dilution

Predicted band size: 68, 57, 66, 65, 69 kDa

Observed band size: 68 kDa



Immunohistochemistry of paraffin-embedded human testis tissue using CSB-PA722574ESR2HU at dilution of 1:100



Immunohistochemistry of paraffin-embedded human breast cancer using CSB-PA722574ESR2HU at dilution of 1:100

Usage

For Research Use Only. Not for use in diagnostic or therapeutic procedures.