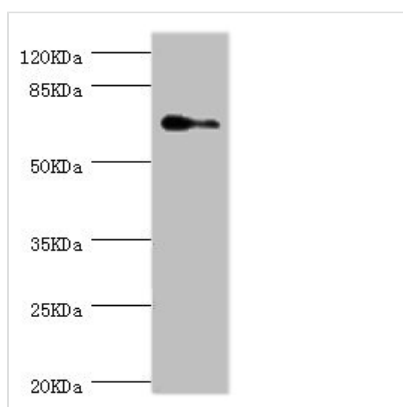




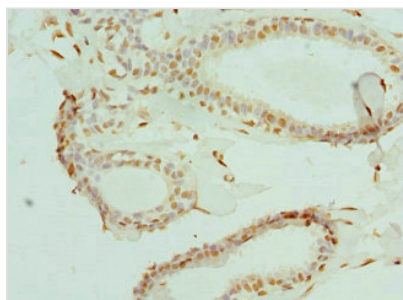
ELF1 Antibody

Product Code	CSB-PA007596DSR1HU
Storage	Upon receipt, store at -20°C or -80°C. Avoid repeated freeze.
Uniprot No.	P32519
Immunogen	Recombinant Human ETS-related transcription factor Elf-1 protein (1-210AA)
Raised In	Rabbit
Species Reactivity	Human
Tested Applications	ELISA, WB, IHC; Recommended dilution: WB:1:1000-1:5000, IHC:1:20-1:200
Form	Liquid
Conjugate	Non-conjugated
Storage Buffer	PBS with 0.02% sodium azide, 50% glycerol, pH7.3.
Purification Method	Antigen Affinity Purified
Isotype	IgG
Clonality	Polyclonal
Alias	ETS-related transcription factor Elf-1 (E74-like factor 1), ELF1
Immunogen Species	Homo sapiens (Human)
Research Area	Epigenetics and Nuclear Signaling
Target Names	ELF1

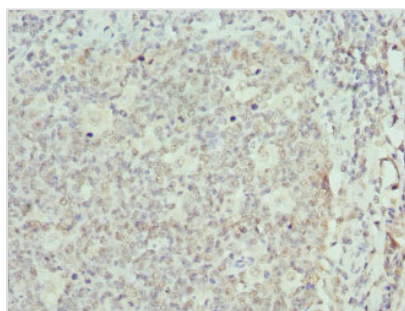
Image



Western blot
All lanes: ELF1 antibody at 1.88μg/ml + HeLa whole cell lysate
Secondary
Goat polyclonal to rabbit IgG at 1/10000 dilution
Predicted band size: 68, 65 kDa
Observed band size: 68 kDa



Immunohistochemistry of paraffin-embedded human breast cancer using CSB-PA007596DSR1HU at dilution of 1:100



Immunohistochemistry of paraffin-embedded human tonsil tissue using CSB-PA007596DSR1HU at dilution of 1:100