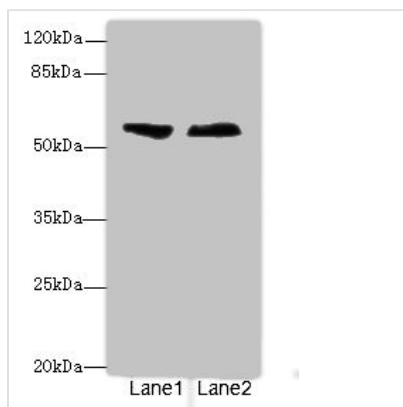




ENTPD2 Antibody

Product Code	CSB-PA007691ESR2HU
Storage	Upon receipt, store at -20°C or -80°C. Avoid repeated freeze.
Uniprot No.	Q9Y5L3
Immunogen	Recombinant Human Ectonucleoside triphosphate diphosphohydrolase 2 protein (28-268AA)
Raised In	Rabbit
Species Reactivity	Human
Tested Applications	ELISA, WB, IHC; Recommended dilution: WB:1:1000-1:5000, IHC:1:20-1:200
Form	Liquid
Conjugate	Non-conjugated
Storage Buffer	PBS with 0.02% sodium azide, 50% glycerol, pH7.3.
Purification Method	Antigen Affinity Purified
Isotype	IgG
Clonality	Polyclonal
Alias	Ectonucleoside triphosphate diphosphohydrolase 2 (NTPDase 2) (EC 3.6.1.-) (CD39 antigen-like 1) (Ecto-ATP diphosphohydrolase 2) (Ecto-ATPDase 2) (Ecto-ATPase 2), ENTPD2, CD39L1
Immunogen Species	Homo sapiens (Human)
Research Area	Neuroscience
Target Names	ENTPD2

Image



Western blot

All lanes: ENTPD2 antibody at 3.6 µg/ml

Lane 1: Human placenta tissue

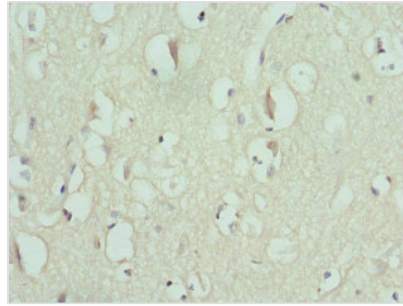
Lane 2: U87 whole cell lysate

Secondary

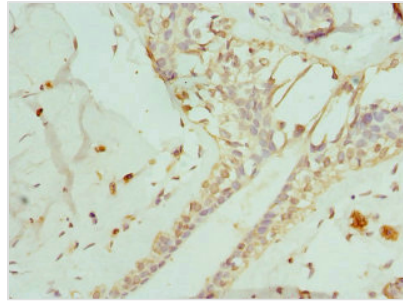
Goat polyclonal to rabbit IgG at 1/10000 dilution

Predicted band size: 54, 52, 49 kDa

Observed band size: 54 kDa



Immunohistochemistry of paraffin-embedded human brain tissue using CSB-PA007691ESR2HU at dilution of 1:100



Immunohistochemistry of paraffin-embedded human breast cancer using CSB-PA007691ESR2HU at dilution of 1:100

Usage

For Research Use Only. Not for use in diagnostic or therapeutic procedures.