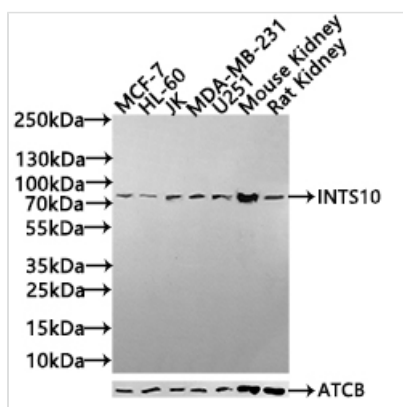




INTS10 Antibody

Product Code	CSB-PA011758ESR1HU
Storage	Upon receipt, store at -20°C or -80°C. Avoid repeated freeze.
Uniprot No.	Q9NVR2
Immunogen	Synthesized peptide derived from INTS10
Raised In	Rabbit
Species Reactivity	Human, Mouse, Rat
Tested Applications	ELISA, WB, IHC; Recommended dilution: WB:1:500-1:2000, IHC:1:20-1:200
Form	Liquid
Storage Buffer	Liquid in PBS containing 50% glycerol, 0.5% BSA and 0.02% sodium azide.
Purification Method	Antigen Affinity Purified
Isotype	IgG
Clonality	Polyclonal
Product Type	Polyclonal Antibody
Immunogen Species	Homo sapiens (Human)
Research Area	Epigenetics and Nuclear Signaling
Target Names	INTS10

Image



Western Blot

Positive WB detected in: MCF-7 whole cell lysate(30µg), HL-60 whole cell lysate(30µg), JK whole cell lysate(30µg), MDA-MB-231 whole cell lysate(30µg), U251 whole cell lysate(30µg), Mouse Kidney tissue lysate(30µg), Rat Kidney tissue lysate(30µg)

All lanes: INTS10 antibody at 1:1000

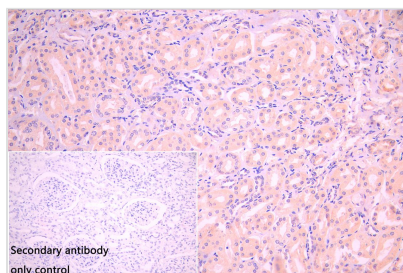
Secondary

Goat polyclonal to rabbit IgG at 1/40000 dilution

Predicted band size: 82 kDa

Observed band size: 82 kDa

Exposure time: 120s



IHC image of CSB-PA011758ESR1HU diluted at 1:100 and staining in paraffin-embedded human kidney tissue performed on a Leica Bond™ system. After dewaxing and hydration, antigen retrieval was mediated by high pressure in a citrate buffer (pH 6.0). Section was blocked with 10% normal goat serum 30min at RT. Then primary antibody (1% BSA) was incubated at 4°C overnight. The primary is detected by a Goat anti-rabbit polymer IgG labeled by HRP and visualized using 0.05% DAB. Secondary antibody only control: uses 1% BSA instead of



primary antibody

Usage

For Research Use Only. Not for use in diagnostic or therapeutic procedures.