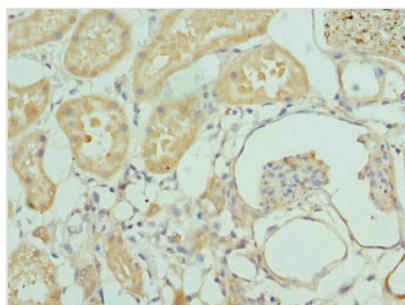




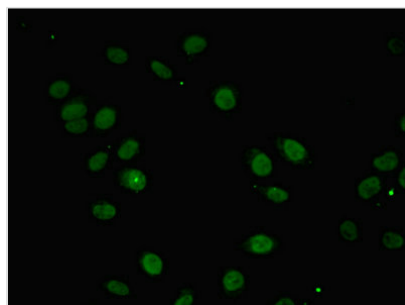
INTS10 Antibody

Product Code	CSB-PA011758ESR2HU
Storage	Upon receipt, store at -20°C or -80°C. Avoid repeated freeze.
Uniprot No.	Q9NVR2
Immunogen	Recombinant Human Integrator complex subunit 10 protein (451-710AA)
Raised In	Rabbit
Species Reactivity	Human
Tested Applications	ELISA, IHC, IF; Recommended dilution: IHC:1:20-1:200, IF:1:50-1:200
Form	Liquid
Conjugate	Non-conjugated
Storage Buffer	PBS with 0.02% sodium azide, 50% glycerol, pH7.3.
Purification Method	Antigen Affinity Purified
Isotype	IgG
Clonality	Polyclonal
Alias	Integrator complex subunit 10 (Int10), INTS10, C8orf35
Immunogen Species	Homo sapiens (Human)
Research Area	Epigenetics and Nuclear Signaling
Target Names	INTS10

Image



Immunohistochemistry of paraffin-embedded human kidney tissue using CSB-PA011758ESR2HU at dilution of 1:100



Immunofluorescent analysis of A549 cells using CSB-PA011758ESR2HU at dilution of 1:100 and Alexa Fluor 488-conjugated AffiniPure Goat Anti-Rabbit IgG(H+L)

Usage For Research Use Only. Not for use in diagnostic or therapeutic procedures.