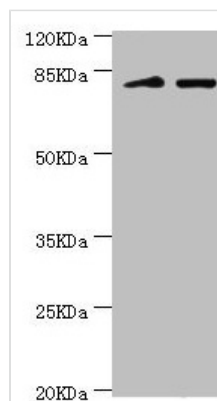




KIF2B Antibody

Product Code	CSB-PA839797DSR2HU
Storage	Upon receipt, store at -20°C or -80°C. Avoid repeated freeze.
Uniprot No.	Q8N4N8
Immunogen	Recombinant Human Kinesin-like protein KIF2B protein (544-673AA)
Raised In	Rabbit
Species Reactivity	Human, Mouse
Tested Applications	ELISA, WB, IHC; Recommended dilution: WB:1:1000-1:5000, IHC:1:20-1:200
Form	Liquid
Conjugate	Non-conjugated
Storage Buffer	PBS with 0.02% sodium azide, 50% glycerol, pH7.3.
Purification Method	Antigen Affinity Purified
Isotype	IgG
Clonality	Polyclonal
Alias	Kinesin-like protein KIF2B, KIF2B
Immunogen Species	Homo sapiens (Human)
Research Area	Cell Biology
Target Names	KIF2B

Image



Western blot

All lanes: KIF2B antibody at 3.59μg/ml

Lane 1: Mouse lung tissue

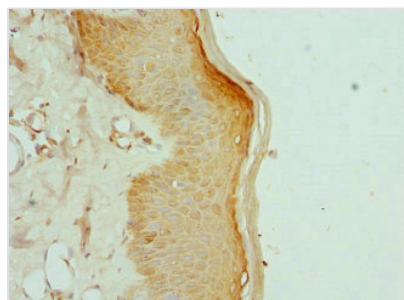
Lane 2: 293T whole cell lysate

Secondary

Goat polyclonal to rabbit IgG at 1/10000 dilution

Predicted band size: 76 kDa

Observed band size: 80, 150 kDa



Immunohistochemistry of paraffin-embedded human skin tissue using CSB-PA839797DSR2HU at dilution of 1:100