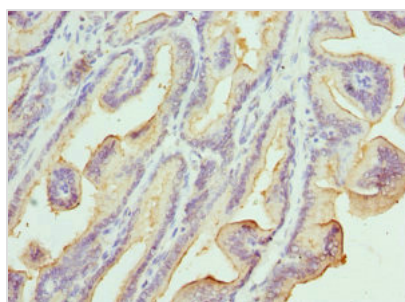




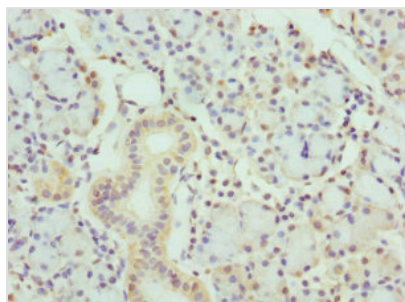
KLK10 Antibody

Product Code	CSB-PA012447ESR1HU
Storage	Upon receipt, store at -20°C or -80°C. Avoid repeated freeze.
Uniprot No.	O43240
Immunogen	Recombinant Human Kallikrein-10 protein (35-276AA)
Raised In	Rabbit
Species Reactivity	Human
Tested Applications	ELISA, IHC; Recommended dilution: IHC:1:20-1:200
Form	Liquid
Conjugate	Non-conjugated
Storage Buffer	PBS with 0.02% sodium azide, 50% glycerol, pH7.3.
Purification Method	Antigen Affinity Purified
Isotype	IgG
Clonality	Polyclonal
Alias	Kallikrein-10 (EC 3.4.21.-) (Normal epithelial cell-specific 1) (Protease serine-like 1), KLK10, NES1 PRSSL1
Immunogen Species	Homo sapiens (Human)
Research Area	Signal Transduction
Target Names	KLK10

Image



Immunohistochemistry of paraffin-embedded human prostate cancer using CSB-PA012447ESR1HU at dilution of 1:100



Immunohistochemistry of paraffin-embedded human pancreatic tissue using CSB-PA012447ESR1HU at dilution of 1:100

Usage

For Research Use Only. Not for use in diagnostic or therapeutic procedures.