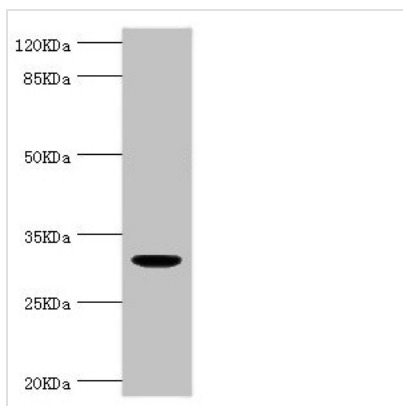




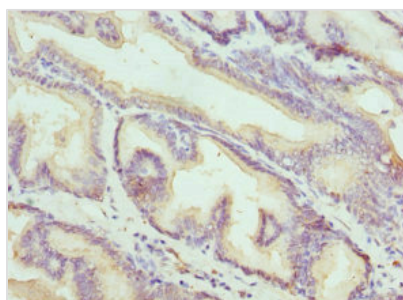
KLK10 Antibody

| | |
|----------------------------|--|
| Product Code | CSB-PA012447ESR2HU |
| Storage | Upon receipt, store at -20°C or -80°C. Avoid repeated freeze. |
| Uniprot No. | O43240 |
| Immunogen | Recombinant Human Kallikrein-10 protein (35-276AA) |
| Raised In | Rabbit |
| Species Reactivity | Human |
| Tested Applications | ELISA, WB, IHC; Recommended dilution: WB:1:1000-1:5000, IHC:1:20-1:200 |
| Form | Liquid |
| Conjugate | Non-conjugated |
| Storage Buffer | PBS with 0.02% sodium azide, 50% glycerol, pH7.3. |
| Purification Method | Antigen Affinity Purified |
| Isotype | IgG |
| Clonality | Polyclonal |
| Alias | Kallikrein-10 (EC 3.4.21.-) (Normal epithelial cell-specific 1) (Protease serine-like 1), KLK10, NES1 PRSSL1 |
| Immunogen Species | Homo sapiens (Human) |
| Research Area | Signal Transduction |
| Target Names | KLK10 |

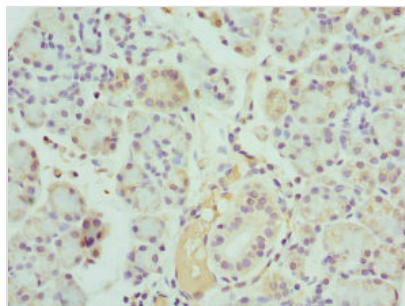
Image



Western blot
 All lanes: KLK10 antibody at 1.48µg/ml + THP-1 whole cell lysate
 Secondary
 Goat polyclonal to rabbit IgG at 1/10000 dilution
 Predicted band size: 30 kDa
 Observed band size: 30 kDa



Immunohistochemistry of paraffin-embedded human prostate cancer using CSB-PA012447ESR2HU at dilution of 1:100



Immunohistochemistry of paraffin-embedded human pancreatic tissue using CSB-PA012447ESR2HU at dilution of 1:100

Usage

For Research Use Only. Not for use in diagnostic or therapeutic procedures.