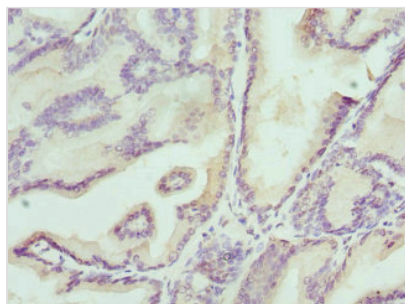




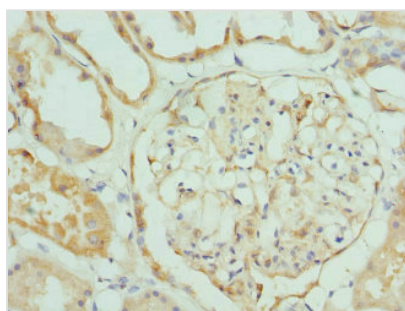
KLK4 Antibody

Product Code	CSB-PA238099ESR2HU
Storage	Upon receipt, store at -20°C or -80°C. Avoid repeated freeze.
Uniprot No.	Q9Y5K2
Immunogen	Recombinant Human Kallikrein-4 protein (30-254AA)
Raised In	Rabbit
Species Reactivity	Human
Tested Applications	ELISA, IHC; Recommended dilution: IHC:1:20-1:200
Form	Liquid
Conjugate	Non-conjugated
Storage Buffer	PBS with 0.02% sodium azide, 50% glycerol, pH7.3.
Purification Method	Antigen Affinity Purified
Isotype	IgG
Clonality	Polyclonal
Alias	Kallikrein-4 (EC 3.4.21.-) (Enamel matrix serine proteinase 1) (Kallikrein-like protein 1) (KLK-L1) (Prostase) (Serine protease 17), KLK4, EMSP1 PRSS17 PSTS
Immunogen Species	Homo sapiens (Human)
Research Area	Signal Transduction
Target Names	KLK4

Image



Immunohistochemistry of paraffin-embedded human prostate cancer using CSB-PA238099ESR2HU at dilution of 1:100



Immunohistochemistry of paraffin-embedded human kidney tissue using CSB-PA238099ESR2HU at dilution of 1:100



Usage

For Research Use Only. Not for use in diagnostic or therapeutic procedures.